

Starting up

INTERMICO index units generally are supplied without oil. Before using the units you have to fill up with oil of the following type:

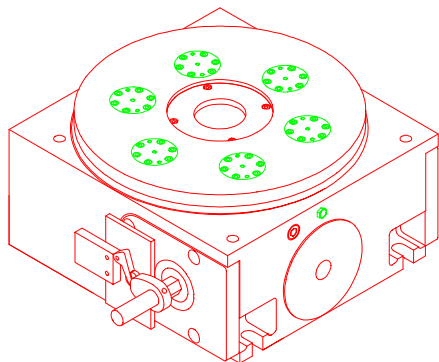
AGIP	Blasia 150	FINA	Giran 150
BP	Energol GR-XP 150	MOBIL	Mobilgear 629
CASTROL	Alpha SP 150	SHELL	Omala Oil 150
CHEVRON	NL gear compound 150	TOTAL	Carter EP 150
ESSO	Spartan EP 150		

By filling up you have to look for cleanness. It may be helpful to use a filter or a screen.

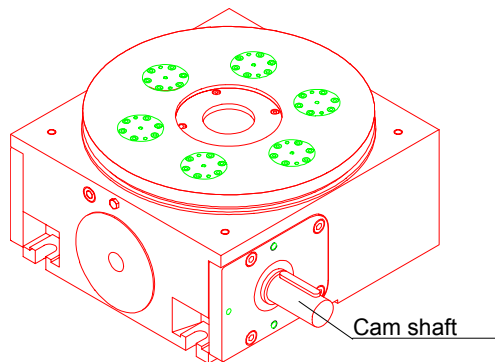
Using a brake motor

If you use a brake motor for running the INTERMICO index drive, you must pay attention for the adjusting of the cam for the control of the brake motor. The keyway of the cam shaft must be stopped in the middle of the dwell.

The regular stopping of the INTERMICO index drive during moving period is to avoid, otherwise the INTERMICO index drive will be damaged.



Position of the cam to control the brake motor.



The keyway of the cam shaft is during a dwell in this position.

Maintenance

INTERMICO index drives need no maintenance beside a checking of the oil level. This checking is done by watching the oil level gage. If there is to see no oil, you have to fill in. If this happens to often you have to look for the reason and to eliminate the reason.

Changing of oil

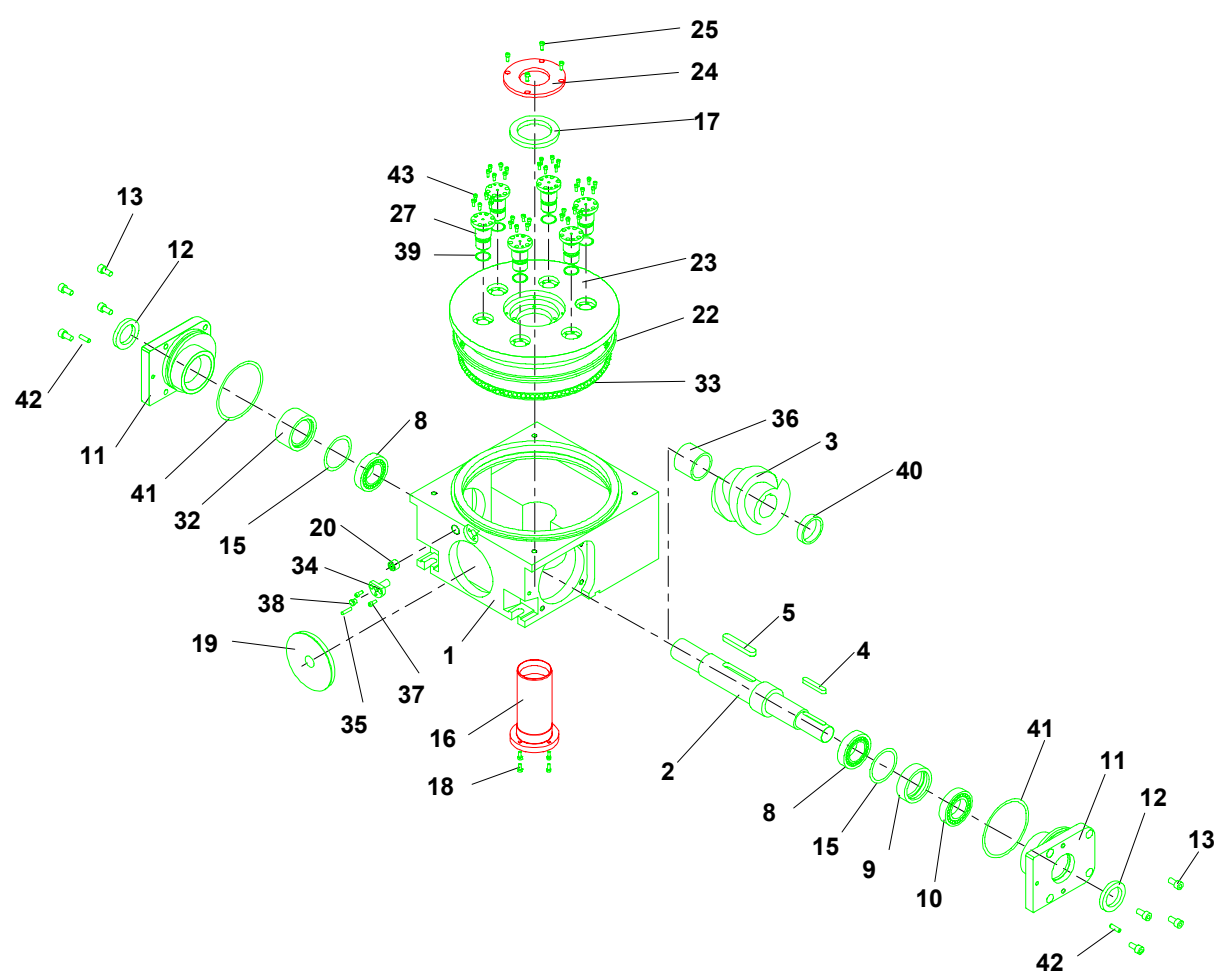
All 8000 hours is to change oil, but latest after 2 years. You have to do as follows:

- open the oil draining plug
- take out the complete oil and than close the oil draining plug,
- fill in oil by the oil filling plug up to the level at the oil level gage. Close the oil filling plug.

General inspection

All 8000 hours the INTERMICO index drive must be checked if between roller followers and cam is too much play. If there is play you have to change all roller followers.

In this case contact our technical office



- | | | |
|------------------------------|----------------------------------|-----------------------|
| 1 Gear housing | 15 Shim | 29 ----- |
| 2 Cam shaft | 16 Central tube | 30 ----- |
| 3 Cylindrical cam | 17 Radial shaft packing ring | 31 ----- |
| 4 Key | 18 Cheese-headed srew | 32 Spacer ring |
| 5 Key | 19 Oil level glass | 33 Roller bearing |
| 6 ----- | 20 Oil filling srew plug | 34 Filling-flange |
| 7 ----- | 21 ----- | 35 Cilindrical pin |
| 8 Taper roller bearing | 22 Packing ring | 36 Spacer ring |
| 9 Spacer ring | 23 Dial plate | 37 Cheese-headed srew |
| 10 Ball bearing | 24 Cover-flange for central hole | 38 Grease-nippel |
| 11 Flange cover | 25 Cheese headed srew | 39 Sealing ring |
| 12 Radial shaft packing ring | 26 ----- | 40 Spacer ring |
| 13 Cheese-headed srew | 27 Roller bolt | 41 Sealing ring |
| 14 ----- | 28 ----- | 42 Cilindrical pin |
| | | 43 Cheese-headed srew |

Purchasing instructions:

By purchasing spare parts, the following informations must be given:
 Type of index drive
 Table-no. (from Type plate)
 Part-no. of space part
 Quantity

Purchasing example:

2 Taper roller bearings for an INTERMICO
 index drive type IR 401
 Table-no. 24
 Purchasing text: For IR 401, No. 24
 2 pieces, Part-no.8