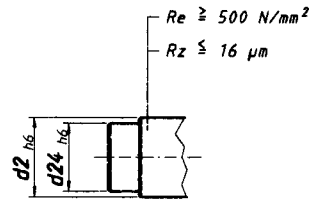
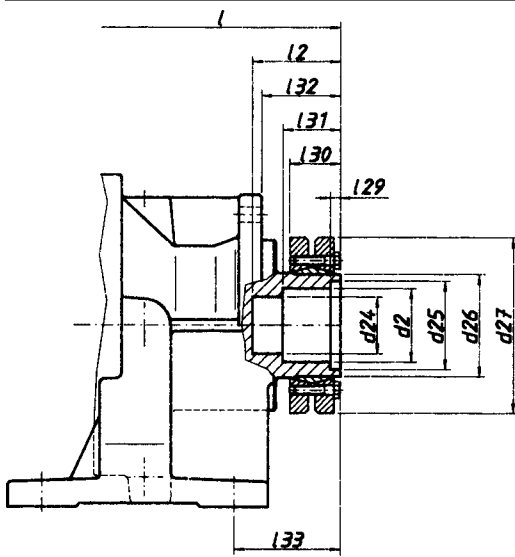


# Schrumpfscheibenanbau bei Hohlwellen

# Locking assembly for hollow output shaft



### Für Kragbelastung nicht geeignet

Bei Radiallast ist ein Gegenlager oder Lagerung der Welle notwendig.

### Not suitable for radial loads

When radial loads are present additional support bearings for the machine driven shaft are necessary.

| Größe<br>size | d2H7 | d24H7 | d25 | d26f7 | d27 | l2  | l29 | l30 | l31 | l32 | l33 | -stufig<br>-stage | I<br>PH /<br>PFH | I<br>MPH /<br>MPFH | I<br>LPH /<br>LPFH /<br>MLPH /<br>MLPFH |
|---------------|------|-------|-----|-------|-----|-----|-----|-----|-----|-----|-----|-------------------|------------------|--------------------|---|
| 04            | 40   | 35    | 42  | 50    | 90  | 45  | 6   | 33  | 32  | 40  | 50  | 1                 | 289              | 259                | -                                       |
|               |      |       |     |       |     |     |     |     |     |     |     | 2                 | 332              | 305                | -                                       |
|               |      |       |     |       |     |     |     |     |     |     |     | 3                 | 378              | 351                | 369                                     |
| 08            | 50   | 40    | 52  | 62    | 110 | 45  | 6   | 35  | 33  | 45  | 55  | 1                 | 329              | 331                | -                                       |
|               |      |       |     |       |     |     |     |     |     |     |     | 2                 | 354              | 327                | -                                       |
|               |      |       |     |       |     |     |     |     |     |     |     | 3                 | 400              | 373                | 391                                     |
| 16            | 60   | 50    | 62  | 80    | 138 | 55  | 8   | 39  | 37  | 50  | 71  | 1                 | 394              | 368                | -                                       |
|               |      |       |     |       |     |     |     |     |     |     |     | 2                 | 400              | 370                | -                                       |
|               |      |       |     |       |     |     |     |     |     |     |     | 3                 | 443              | 416                | 455                                     |
| 32            | 70   | 60    | 72  | 85    | 155 | 65  | 10  | 47  | 44  | 70  | 94  | 1                 | 465              | 438                | -                                       |
|               |      |       |     |       |     |     |     |     |     |     |     | 2                 | 463              | 465                | -                                       |
|               |      |       |     |       |     |     |     |     |     |     |     | 3                 | 488              | 461                | 529                                     |
| 64            | 90   | 70    | 92  | 120   | 215 | 85  | 11  | 62  | 59  | 105 | 105 | 1                 | 550              | 490                | -                                       |
|               |      |       |     |       |     |     |     |     |     |     |     | 2                 | 554              | 528                | -                                       |
|               |      |       |     |       |     |     |     |     |     |     |     | 3                 | 560              | 530                | 635                                     |
| 128           | 110  | 90    | 112 | 155   | 265 | 100 | 15  | 75  | 71  | 120 | 149 | 2                 | 678              | 651                | -                                       |
|               |      |       |     |       |     |     |     |     |     |     |     | 3                 | 676              | 678                | 757                                     |
|               |      |       |     |       |     |     |     |     |     |     |     | 2                 | 835              | 775                | -                                       |
| 256           | 140  | 120   | 142 | 185   | 330 | 133 | 18  | 101 | 98  | 335 | 155 | 2                 | 835              | 775                | -                                       |
|               |      |       |     |       |     |     |     |     |     |     |     | 3                 | 839              | 813                | 955                                     |

**Achtung:**  
Das Anzugsmoment der Spannschrauben der Schrumpfscheibe bitte den Angaben auf der Schrumpfscheibe entnehmen.

**Anmerkung:**  
Bei abtriebsseitiger Hohlwellen-Ausführung kommt bei der Typenbezeichnung ein "H" hinzu.  
Beispiel: Typ "P" mit Hohlwelle = Typ "PH"

**Attention:**  
Tighten the screws of the shaft locking bush to the correct torque which is shown on the locking bush in Nm.

**Notes:**  
The type description for gearbox with hollow output shaft is suffix "H"  
Type "P" with hollow output shaft = Type "PH"