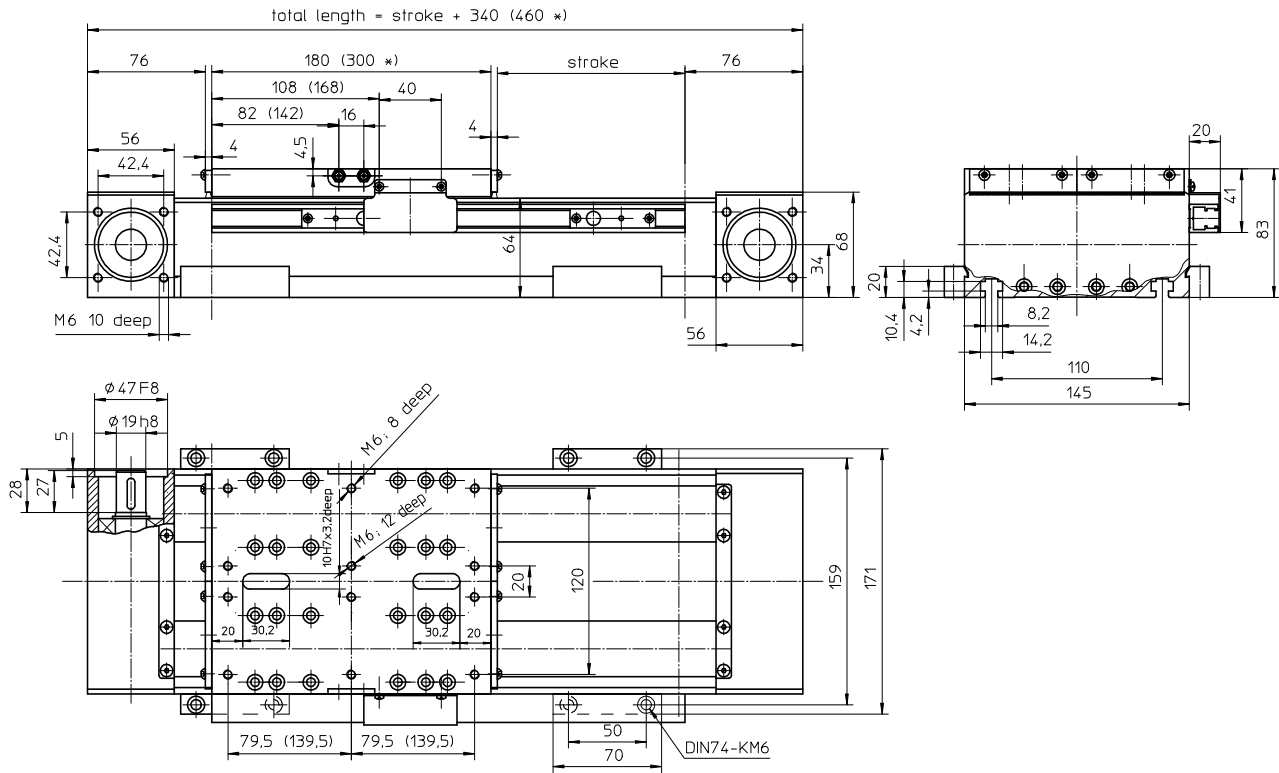


with tooth belt drive and integrated double linear guide



Weights

Basic length, no stroke:
 100 mm stroke:
 Carriage:
 Mass inertia:

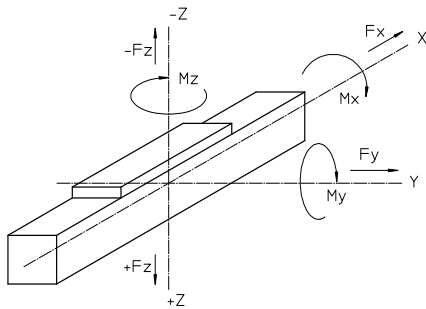
ZSS

13.20 kg
 1.40 kg
 4.90 kg
 0.0012 kgm²

Technical data

Linear speed: max. 5 m/s
 Repeatability: ± 0.08 mm
 Acceleration: max. 40 m/s²
 Idle torque: 2.2 Nm
 Drive element: tooth belt 50 AT5
 Stroke per revolution: 110 mm
 Total length: up to 2000 mm

Loads and load moments



Type	with linear guide (ZSS)
Load	dynamic [N]
Fx	2200
Fy	2500
Fz	5000
-Fz	3000
Load moment	dynamic [Nm]
Mx	800
My	1000
Mz	1000

* data in () refers to 300 mm long carriage