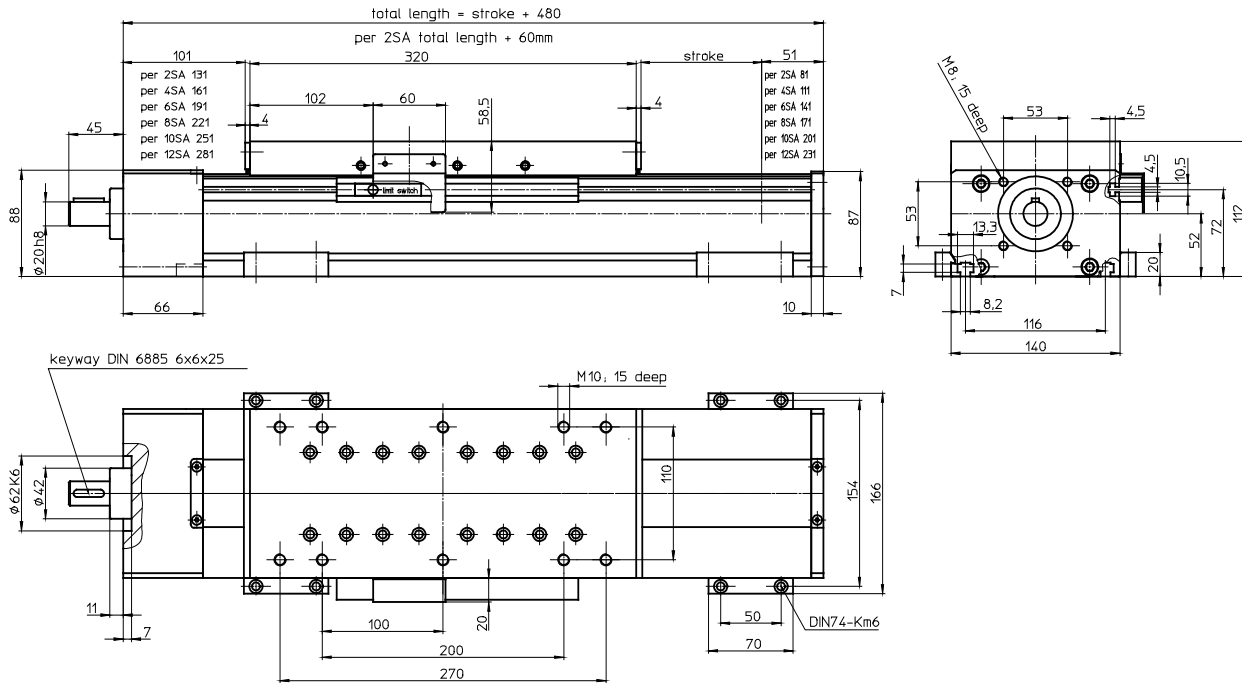


with ball screw, trapezoidal screw, roller guideway or double linear guide



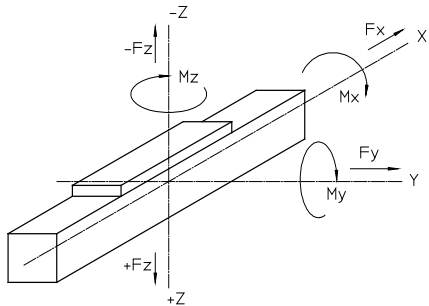
Weights

	SRS	SSS
Basic length, no stroke:	14.00 kg	15.00 kg
100 mm stroke:	1.40 kg	1.90 kg
Carriage:	6.20 kg	7.00 kg
Idle torque:	1.00 Nm	1.50 Nm

Technical data

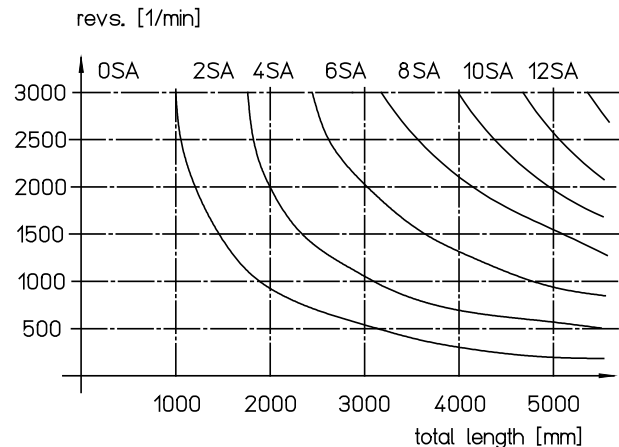
Linear speed:	0.1 - 2.5 m/s **
Repeatability:	± 0.03 mm (ball screw)
Acceleration:	max. 20 m/s ²
Mass inertia:	2.2 kgcm ² /m
Drive element:	ball screw drive: diameter: 25 mm pitch: 5, 10, 25, 50 mm trapezoidal screw: diameter: 24 mm pitch: 5 mm
Total length:	up to 5400 mm (longer on request)

Loads and load moments



Type	with roller guideway (SRS)	with linear guide (SSS)
Load	dynamic [N]	dynamic [N]
Fx **	6000	6000
Fy	2500	2500
Fz	5000	6000
-Fz	3000	4000
Load moment	dynamic [Nm]	dynamic [Nm]
Mx	350	500
My	700	1000
Mz	700	1000

Screw supports SA



* MM only for pitch 5 / 10 / 25 possible

** max. data for ball screw 2510