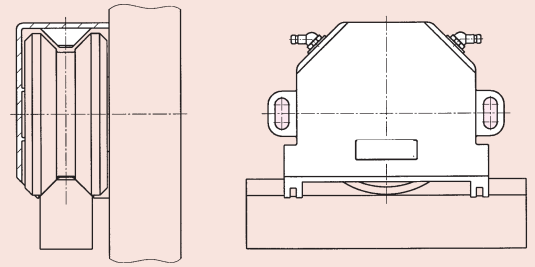


# BAUGRÖSSE 35

TAILLE 35  
SIZE 35

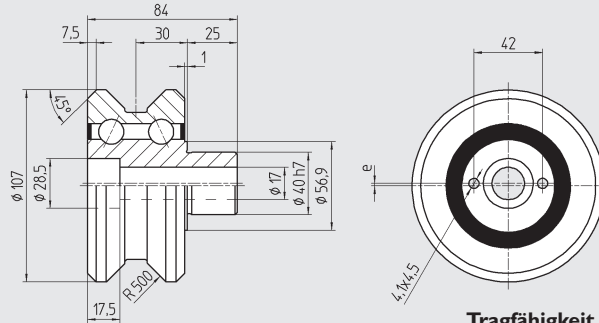
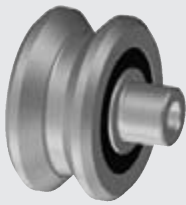


Konstruktionsabmasse  
Cotes de montage  
Mounting dimensions

## Führungsrolle

## Galet de guidage

## Roller for vee bars



DIN 912 8.8 M<sub>A</sub>  
M16x80 200 Nm

### Tragfähigkeit / Capacité de charge / Load carrying capacity

Type	Part No.	Excenter	G <sub>a</sub> (µm)	Mat.	m (kg)	C <sub>0w</sub> (N)	C <sub>w</sub> <sup>①</sup> (N)	C <sub>w</sub> <sup>②</sup> (N)	n <sub>max</sub> (min <sup>-1</sup> )
FR 35	900 735	1 mm	+11/+33	100Cr6	1.3505	2,8	32 000	28 400	3 600
FR 35 A	900 736	1 mm	-3/+5	100Cr6	1.3505	2,8	28 800	25 600	3 600
FR 35 Z	900 737	0 mm	+11/+33	100Cr6	1.3505	2,8	32 000	28 400	3 600
FR 35 ZA	900 739	0 mm	-3/+5	100Cr6	1.3505	2,8	28 800	25 600	3 600
FR 35 R	900 738	1 mm	+11/+33	X46Cr13	1.4034	2,8	24 000	21 300	3 600

G<sub>a</sub> Axiale Lagerluft, jeu axial, internal axial clearance

Weg, Chemin parcouru, Distance: ① 10<sup>6</sup>m ② 10<sup>8</sup>m

## Befestigungsflansch

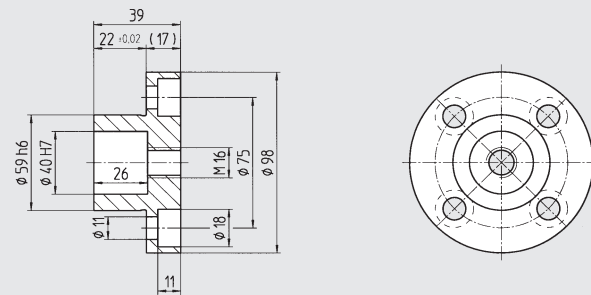
## Bride de fixation

## Mounting flange

brüniert

noirçi

black oxide



DIN 912 8.8 M<sub>A</sub>  
M10x25 48 Nm

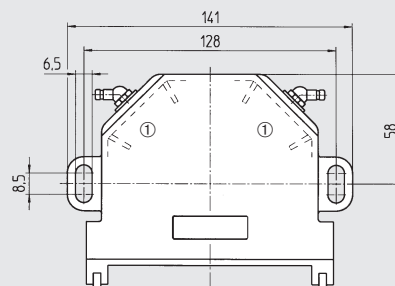
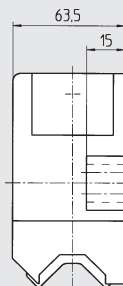
Type	Part No.	Mat.	m (kg)
SP 35	902 036	Ck45	1,10
SPE 35	902 044	Ck45	0,78

Seite / Page 01.52

## Abstreifer-Schmiereinheit

## Racleur graisseur

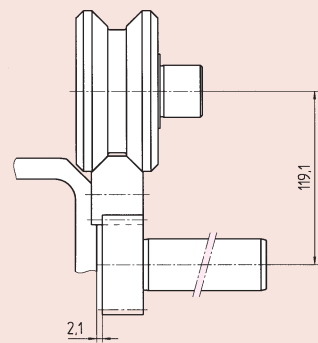
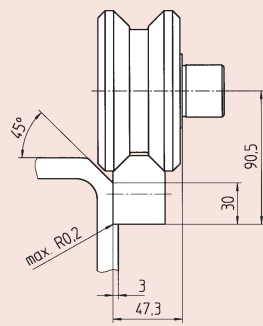
## Wiper and lubrication unit



DIN 912 8.8 M<sub>A</sub>  
M6x25 8,6 Nm

① Ölgetränkter Filz  
Feutre imbibé d'huile  
Oil soaked felt inserts

Type	Part No.	Mat.	m (kg)
RA 35	900 044	PA-6/POM	0,10

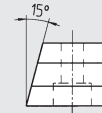
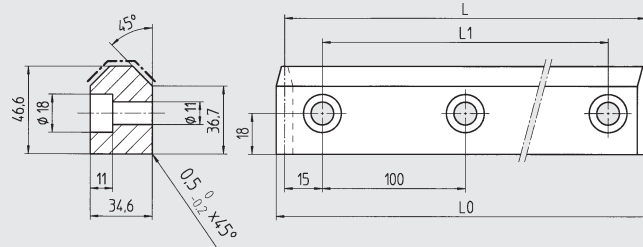
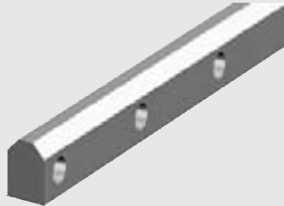


Konstruktionsabmasse  
Cotes de montage  
Mounting dimensions

### Führungsschiene

### Rail de guidage

### Guideway vee bar



Type	Part No.	L	L <sub>0</sub>	L <sub>1</sub>	Mat.	m (kg)
FS 350	900 335	1 230	1 239.27	1 200	58CrMoV4 1.7792	13,90
	900 336	930	939.27	900	58CrMoV4 1.7792	10,50
	900 337	630	639.27	600	58CrMoV4 1.7792	7,10
	900 338	330	339.27	300	58CrMoV4 1.7792	3,70
FS 350 R	900 994	630	639.27	600	X42Cr13 1.2083	7,10

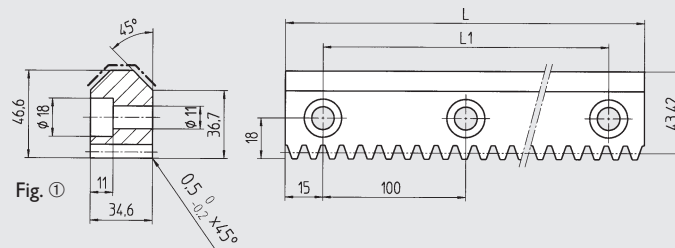
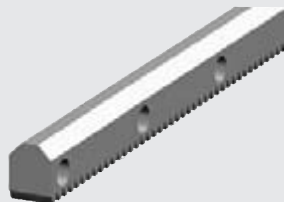


DIN 912 8.8 M<sub>A</sub>  
M10x35 48 Nm

### Führungszahnstange

### Rail crémaillère de guidage

### Guideway vee rack



Type	Part No.	L	L <sub>1</sub>	Module p	Fig.	Mat.	m (kg)
FZ 35	900 135	1230	1200	3.1831 10,0	①	58CrMoV4 1.7792	13,00
	900 136	930	900	3.1831 10,0	①	58CrMoV4 1.7792	9,80
	900 137	630	600	3.1831 10,0	①	58CrMoV4 1.7792	6,65
	900 138	330	300	3.1831 10,0	①	58CrMoV4 1.7792	3,50
FZ 35 G	900 085	1230	1200	3.1831 10,0	②	58CrMoV4 1.7792	13,0
	900 086	630	600	3.1831 10,0	②	58CrMoV4 1.7792	6,65
	900 087	330	300	3.1831 10,0	②	58CrMoV4 1.7792	3,50
FZ 35 R	900 999	630	600	3.1831 10,0	②	X42Cr13 1.2083	6,65

weich, soft  
Quality  
7h25

hart, trempé  
Quality  
6h23

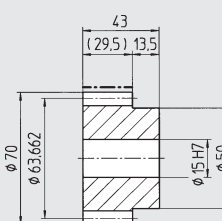
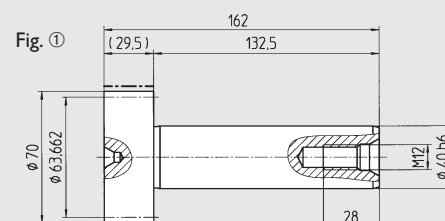
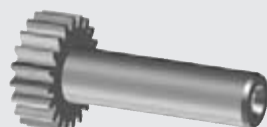


Einbau  
Montage / Assembly  
Seite / Page 01.71

### Antriebsritzel

### Pignon

### Drive pinion



Type	Part No.	z	Module p	Fig.	Mat.	m (kg)
WR 35	900 935	20	3.1831 10,0	①	16MnCr5 1.7131	1,95
MR 10	154 100	20	3.1831 10,0	②	16MnCr5 1.7131	0,90

hart, trempé  
Quality  
6f24