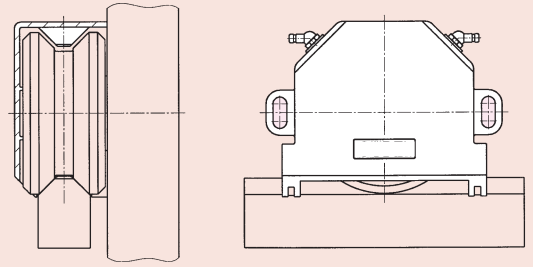


BAUGRÖSSE 25

TAILLE 25
SIZE 25

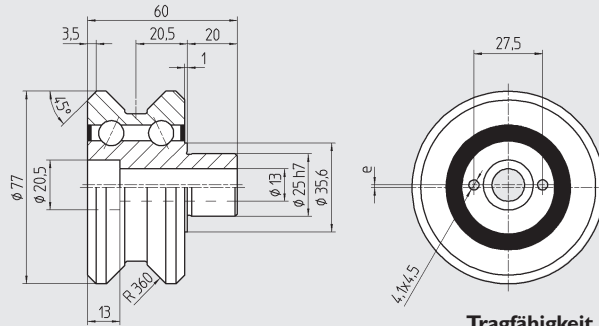


Konstruktionsabmasse
Cotes de montage
Mounting dimensions

Führungsrolle

Galet de guidage

Roller for vee bars



DIN 912 8.8 M_A
M12x60 83 Nm

Tragfähigkeit / Capacité de charge / Load carrying capacity

Type	Part No.	Excenter	G _a (µm)	Mat.	m (kg)	C _{0w} (N)	C _w ^① (N)	C _w ^② (N)	n _{max} (min ⁻¹)	
FR 25	900 725	1 mm	+8/+27	100Cr6	1.3505	1,1	15 000	16 300	3 530	5 600
FR 25 A	900 726	1 mm	-3/+5	100Cr6	1.3505	1,1	13 500	14 700	3 200	5 600
FR 25 Z	900 727	0 mm	+8/+27	100Cr6	1.3505	1,1	15 000	16 300	3 530	5 600
FR 25 ZA	900 729	0 mm	-3/+5	100Cr6	1.3505	1,1	13 500	14 700	3 200	5 600
FR 25 R	900 728	1 mm	+8/+27	X46Cr13	1.4034	1,1	11 000	12 450	2 650	5 600

G_a Axiale Lagerluft, jeu axial, internal axial clearance

Weg, Chemin parcouru, Distance: ① 10⁶m ② 10⁸m

Befestigungsflansch

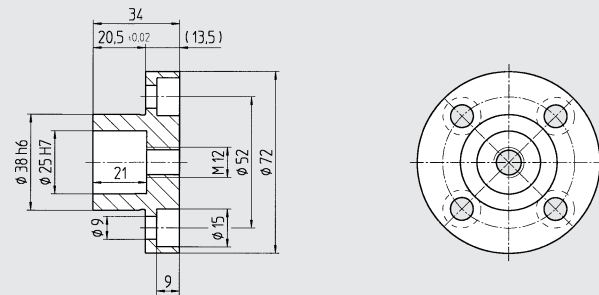
Bride de fixation

Mounting flange

brüniert

noirçi

black oxide



DIN 912 8.8 M_A
M8x20 24 Nm

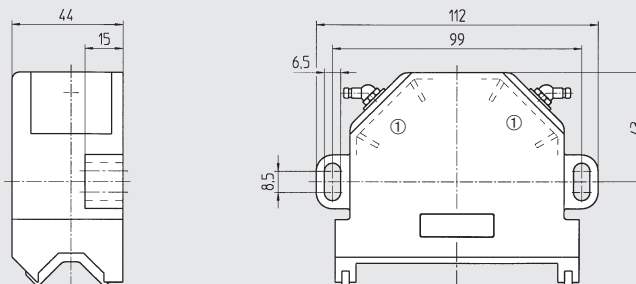
Type	Part No.	Mat.	m (kg)
SP 25	902 026	Ck45	1.1191 0,5
SPE 25	902 043	Ck45	1.1191 0,32

Seite / Page 01.52

Abstreifer-Schmiereinheit

Racleur graisseur

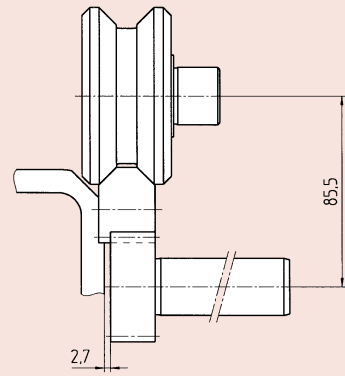
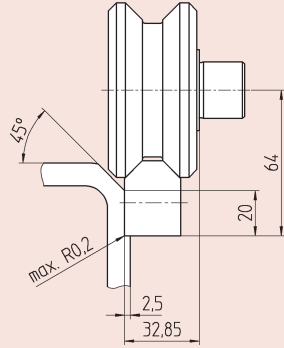
Wiper and lubrication unit



DIN 912 8.8 M_A
M6x25 8.6 Nm

① Ölgetränkter Filz
Feutre imbibé d'huile
Oil soaked felt inserts

Type	Part No.	Mat.	m (kg)
RA 25	900 043	PA-6/POM	0,06

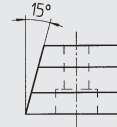
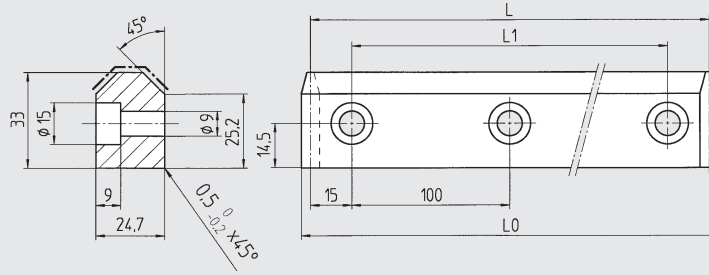
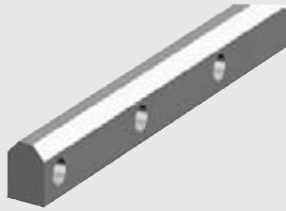


Konstruktionsabmasse
Cotes de montage
Mounting dimensions

Führungsschiene

Rail de guidage

Guideway vee bar



Type	Part No.	L	L ₀	L ₁	Mat.	m (kg)
FS 250	900 325	230	236.62	200	58CrMoV4 1.7792	7,0
	900 326	930	936.62	900	58CrMoV4 1.7792	5,3
	900 327	630	636.62	600	58CrMoV4 1.7792	3,6
	900 328	330	336.62	300	58CrMoV4 1.7792	1,9
FS 250 R	900 993	630	636.62	600	X42Cr13 1.2083	3,6

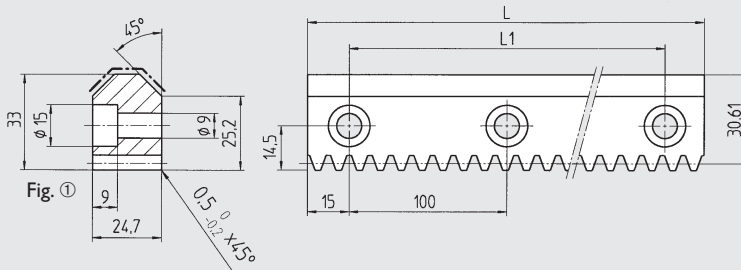
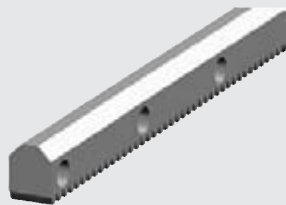


DIN 912 8.8 M_A
M8x25 24 Nm

Führungszahnstange

Rail crémaillère de guidage

Guideway vee rack



Type	Part No.	L	L ₁	Module p	Fig.	Mat.	m (kg)
FZ 25	900 125	1230	1200	2.3873 7,50	①	58CrMoV4 1.7792	6,4
	900 126	930	900	2.3873 7,50	①	58CrMoV4 1.7792	4,85
	900 127	630	600	2.3873 7,50	①	58CrMoV4 1.7792	3,25
	900 128	330	300	2.3873 7,50	①	58CrMoV4 1.7792	1,7
FZ 25 G	900 075	1230	1200	2.3873 7,50	②	58CrMoV4 1.7792	6,4
	900 076	630	600	2.3873 7,50	②	58CrMoV4 1.7792	3,25
	900 077	330	300	2.3873 7,50	②	58CrMoV4 1.7792	1,7
FZ 25 R	900 998	630	600	2.3873 7,50	②	X42Cr13 1.2083	3,25

weich, soft
Quality
7h25

hart, trempé
Quality
6h23

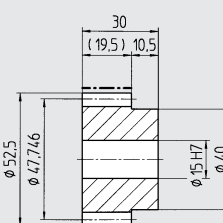
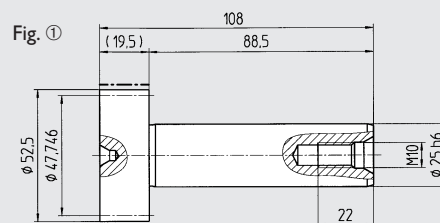
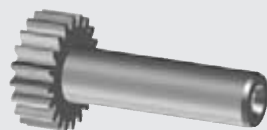


Einbau
Montage / Assembly
Seite / Page 01.71

Antriebsritzel

Pignon

Drive pinion



Type	Part No.	z	Module p	Fig.	Mat.	m (kg)
WR 25	900 925	20	2.3873 7,50	①	16MnCr5 1.7131	0,6
MR 7,5	154 075	20	2.3873 7,50	②	16MnCr5 1.7131	0,35

hart, trempé
Quality
6f24

p (mm) Teilung, pas, pitch