

METRISCHE TEILUNG

À PAS MÉTRIQUE METRIC PITCH

feinstgestossen taillage de précision precision cut
Quality 7h25

Teilung / pas / pitch (mm)

2 5 7.5 10

Gerade verzahnt, feinstgestossen

Material: 58CrMoV4 DIN 1.7792
Profil: allseitig geschliffen
Zahnung: Eingriffswinkel $\alpha=20^\circ$
 feinstgestossen
Qualität: 7h25 DIN 3962/63/67
P_f (mm): -0.05/-0.2

Dentures droite, taillage de précision

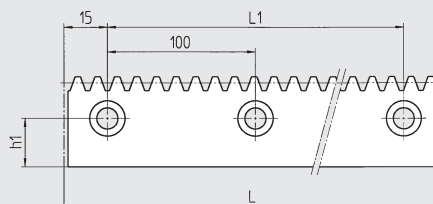
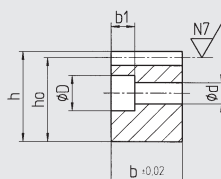
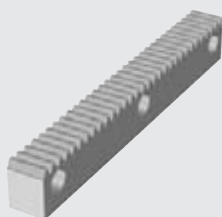
Matière: 58CrMoV4 DIN 1.7792
Profil: rectifiée toutes les faces
Denture: angle de pression $\alpha=20^\circ$
 taillage de précision
Qualité: 7h25 DIN 3962/63/67
P_f (mm): -0.05/-0.2

F_p (mm):
 Teilungs-Gesamtabweichung
 Erreur totale de pas
 Cumulative pitch error

Straight tooth, precision cut

Material: 58CrMoV4 DIN 1.7792
Profil: all faces ground
Teeth: pressure angle $\alpha=20^\circ$
 precision cut
Quality: 7h25 DIN 3962/63/67
P_f (mm): -0.05/-0.2

P_f (mm):
 Toleranz der teilungsgenauen Ablängung
 Tolérance de coupe par rapport au pas
 Tolerance of cut for continuous mounting



Type	Part No.	L	L ₁	Module	p	h ₀	b	h	h ₁	D	d	b ₁	F _p	m (kg)
LMZ 2.0	153 020	1 030	1 000	0.637	2.0	18.86	9.5	19.5	10.5	10	5.8	5.7	0.079	1.40
LMZ 5.0	153 050	1 030	1 000	1.592	5.0	22.91	14.5	24.5	13.0	11	7.0	6.8	0.058	2.60
LMZ 5.5	153 055	1 030	1 000	1.592	5.0	27.91	19.5	29.5	15.5	15	9.0	9.0	0.058	4.20
LMZ 7.5	153 075	1 230	1 200	2.387	7.5	30.61	24.7	33.0	18.5	15	9.0	9.0	0.057	7.00
LMZ 10.0	153 100	1 230	1 200	3.183	10.0	43.42	34.6	46.6	28.6	18	11.0	11.0	0.055	13.90

p (mm) Teilung, pas, pitch



METRISCHE TEILUNG

À PAS MÉTRIQUE METRIC PITCH

feinstgestossen
taillage de précision
precision cut

Quality
7h25

Teilung / pas / pitch (mm)

2 5 7.5 10 12.5

Gerade verzahnt, feinstgestossen

Material: ETG88 DIN 17210 für RDMZ
Ck45 K+N DIN 1.1191 für DMZ
Profil: allseitig geschliffen
Zahnung: Eingriffswinkel $\alpha=20^\circ$
feinstgestossen
Qualität: 7h25 DIN 3962/63/67

Dentures droite, taillage de précision

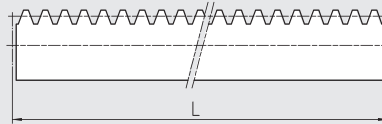
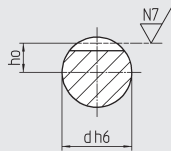
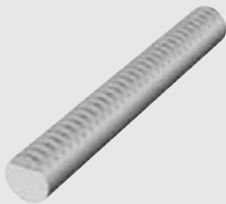
Matière: ETG88 DIN 17210 pour RDMZ
Ck45 K+N DIN 1.1191 pour DMZ
Profil: rectifiée toutes les faces
angle de pression $\alpha=20^\circ$
taillage de précision
Qualité: 7h25 DIN 3962/63/67

Straight tooth, precision cut

Material: ETG88 DIN 17210 for RDMZ
Ck45 K+N DIN 1.1191 for DMZ
Profil: all faces ground
Teeth: pressure angle $\alpha=20^\circ$
precision cut
Quality: 7h25 DIN 3962/63/67

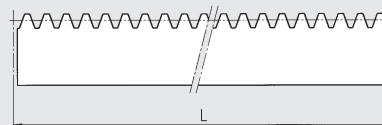
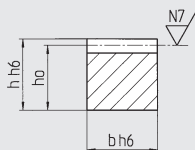
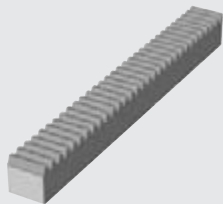
F_p (mm):
Teilungs-Gesamtabweichung
Erreur totale de pas
Cumulative pitch error

P_f (mm):
Toleranz der teilungsgenauen Ablängung
Tolérance de coupe par rapport au pas
Tolerance of cut for continuous mounting



Type	Part No.	L	Module	p	h ₀	d _{h6}	F _p	P _f	m (kg)
RDMZ 2.0	151 020	1 000	0.637	2.0	4.36	10	0.078	-0.05/0.21	0.62
RDMZ 5.0	151 050	1 000	1.592	5.0	5.91	15	0.057	-0.05/0.52	1.39
RDMZ 7.5	151 075	1 005	2.387	7.5	7.61	20	0.052	-0.05/-0.78	2.48
RDMZ 10.0	151 100	1 000	3.183	10.0	11.82	30	0.050	-0.05/-1.05	5.55
RDMZ 12.5	151 125	1 000	3.979	12.5	16.02	40	0.051	-0.05/-1.31	9.86

p (mm) Teilung, pas, pitch



Type	Part No.	L	Module	p	h ₀	b	h	p _f	m (kg)
DMZ 2.0	152 020	1 000	0.637	2.0	8.86	9.5	9.5	-0.05/-0.21	0.66
DMZ 5.0	152 050	1 000	1.592	5.0	12.90	14.5	14.5	-0.05/-0.52	1.47
DMZ 7.5	152 075	1 005	2.387	7.5	17.11	19.5	19.5	-0.05/-0.78	2.63
DMZ 10.0	152 100	1 000	3.183	10.0	26.32	29.5	29.5	-0.05/-1.05	6.09
DMZ 12.5	152 125	1 000	3.979	12.5	35.52	39.5	39.5	-0.05/-1.31	11.01

p (mm) Teilung, pas, pitch

