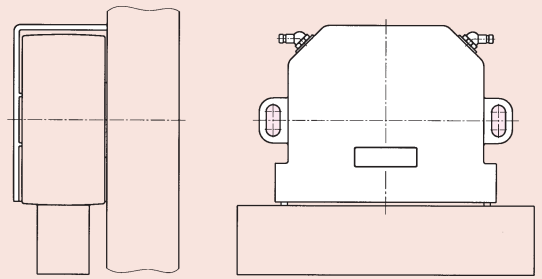


BAUGRÖSSE 20

TAILLE 20
SIZE 20

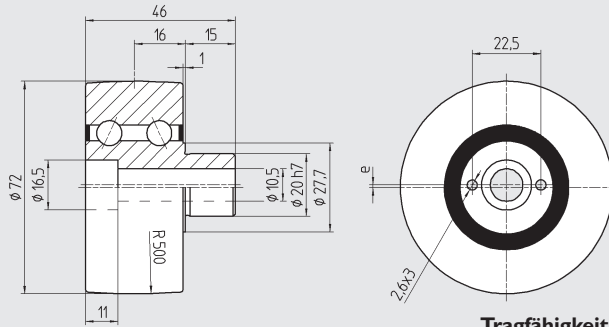


Konstruktionsabmasse
Cotes de montage
Mounting dimensions

Laufrolle

Galet de roulement

Plain roller



DIN 912 8.8 M_A
M10x50 48 Nm

Tragfähigkeit / Capacité de charge / Load carrying capacity

Type	Part No.	Excenter	G _a (µm)	Mat.	m (kg)	C _w (N)	C _w ^① (N)	C _w ^② (N)	n _{max} (min ⁻¹)	
LR 20	900 820	1 mm	+6/+23	100Cr6	1.3505	0,70	9 500	10 200	2 200	7 000
LR 20 A	900 821	1 mm	-3/+5	100Cr6	1.3505	0,70	8 600	9 000	2 000	7 000
LR 20 Z	900 822	0 mm	+6/+23	100Cr6	1.3505	0,70	9 500	10 200	2 200	7 000
LR 20 R	900 823	1 mm	+6/+23	X46Cr13	1.4034	0,70	7 100	7 500	1 650	7 000

G_a Axiale Lagerluft, jeu axial, internal axial clearance

Weg, Chemin parcouru, Distance: ① 10⁶m ② 10⁸m

Befestigungsflansch

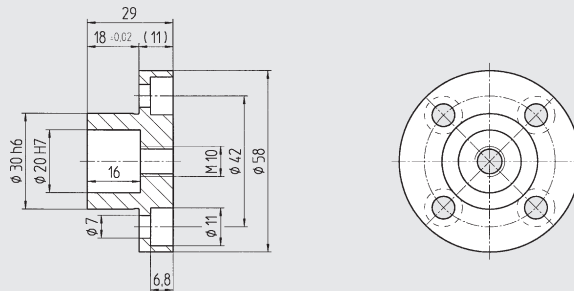
Bride de fixation

Mounting flange

brüniert

noirçi

black oxide



DIN 912 8.8 M_A
M6x16 9,9 Nm

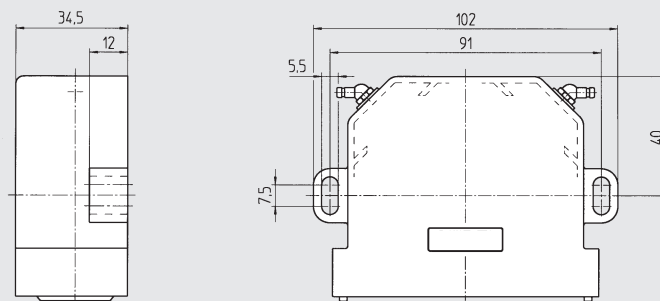
Type	Part No.	Mat.	m (kg)
SP 20	902 021	Ck45	1.1191
SPE 20	902 042	Ck45	1.1191

Seite / Page 01.52

Abstreifer-Schmiereinheit

Racleur graisseur

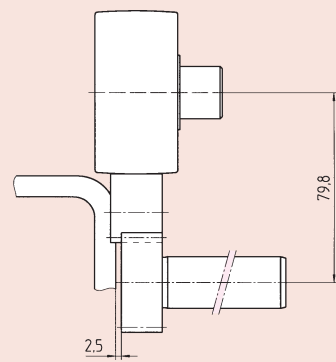
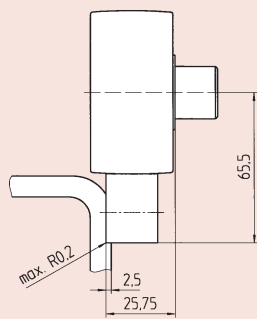
Wiper and lubrication unit



DIN 912 8.8 M_A
M5x20 5 Nm

① Ölgetränkter Filz
Feutre imbibé d'huile
Oil soaked felt inserts

Type	Part No.	Mat.	m (kg)
RAL 20	900 047	PA-6/POM	0,04

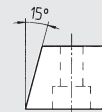
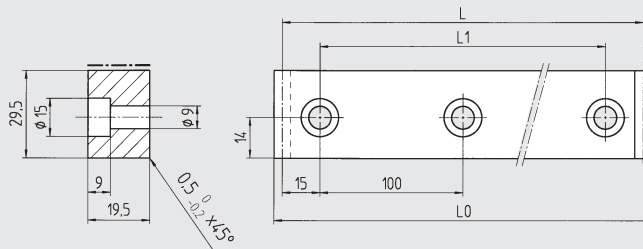
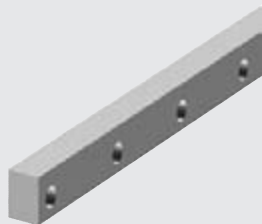


Konstruktionsabmasse
Cotes de montage
Mounting dimensions

Laufschiene

Rail de roulement

Guideway flat rail



Type	Part No.	L	L ₀	L ₁	Mat.	m (kg)
LS 200	900 620	1 030	1 035.23	1 000	58CrMoV4 1.7792	4,40
	900 621	630	635.23	600	58CrMoV4 1.7792	2,70
	900 622	330	335.23	300	58CrMoV4 1.7792	1,50
LS 200 R	901 002	630	635.23	600	X42Cr13 1.2083	2,70



DIN 912 8.8 M_A
M8x20 24 Nm

Laufzahnstange

Rail crémaillère de roulement

Guideway rack

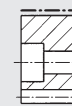
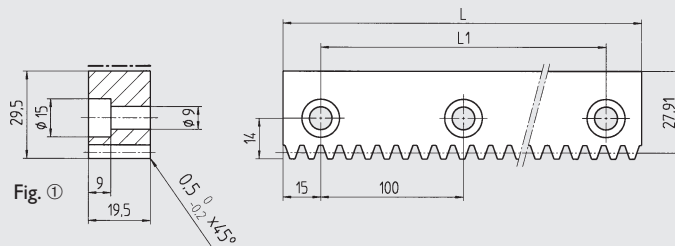
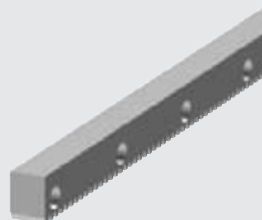


Fig. ②

Type	Part No.	L	L ₁	Module	p	Fig.	Mat.	m (kg)
LZ 20	900 420	1 030	1 000	1.5915	5,0	①	58CrMoV4 1.7792	4,20
	900 421	630	600	1.5915	5,0	①	58CrMoV4 1.7792	2,60
	900 422	330	300	1.5915	5,0	①	58CrMoV4 1.7792	1,35
LZ 20 G	900 073	1 030	1 000	1.5915	5,0	②	58CrMoV4 1.7792	4,20
	900 074	330	300	1.5915	5,0	②	58CrMoV4 1.7792	1,35
LZ 20 R	901 007	630	600	1.5915	5,0	②	X42Cr13 1.2083	2,60

weich, soft
Quality
7h25

hart, trempé
Quality
6h23



Einbau
Montage / Assembly
Seite / Page 01.71

Antriebsritzel

Pignon

Drive pinion

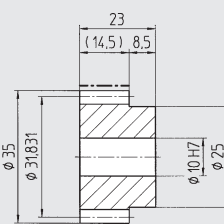
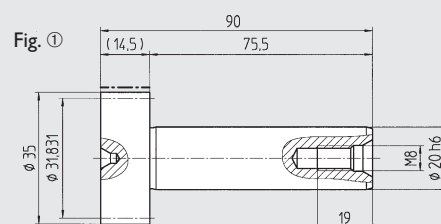
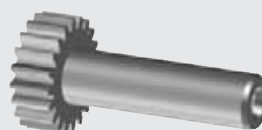


Fig. ②

Type	Part No.	z	Module	p	Fig.	Mat.	m (kg)
WR 20	900 920	20	1.5915	5,0	①	16MnCr5 1.7131	0,30
MR 5	154 050	20	1.5915	5,0	②	16MnCr5 1.7131	0,10

hart, trempé
Quality
6f24

p (mm) Teilung, pas, pitch