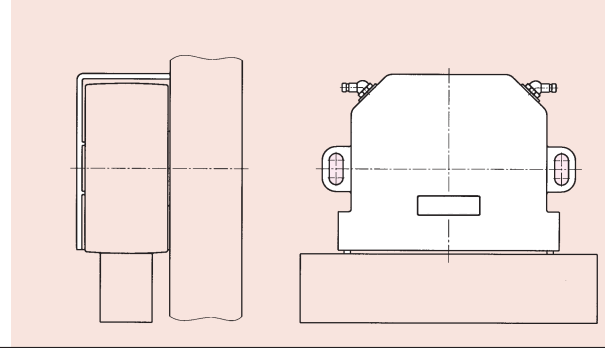


BAUGRÖSSE 10

TAILLE 10
SIZE 10

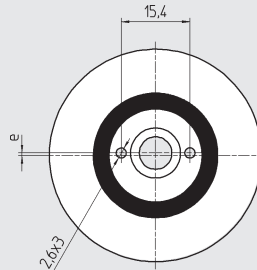
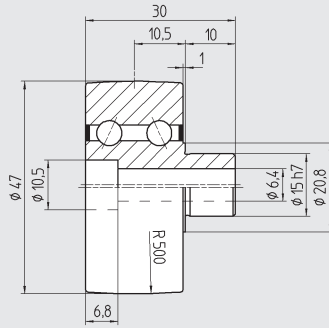


Konstruktionsabmasse
Cotes de montage
Mounting dimensions

Laufrolle

Galet de roulement

Plain roller



DIN 912 8.8 M_A
M6x30 9,9 Nm

Tragfähigkeit / Capacité de charge / Load carrying capacity

| Type | Part No. | Excenter | G _a (µm) | Mat. | m (kg) | C _{0w} (N) | C _{w①} (N) | C _{w②} (N) | n _{max} (min ⁻¹) | |
|---------|----------|----------|---------------------|---------|--------|---------------------|---------------------|---------------------|---------------------------------------|--------|
| LR 10 | 900 810 | 1 mm | +6/+23 | 100Cr6 | 1.3505 | 0,18 | 5 300 | 4 900 | 1 060 | 12 000 |
| LR 10 A | 900 811 | 1 mm | -3/+5 | 100Cr6 | 1.3505 | 0,18 | 4 800 | 4 400 | 950 | 12 000 |
| LR 10 Z | 900 812 | 0 mm | +6/+23 | 100Cr6 | 1.3505 | 0,18 | 5 300 | 4 900 | 1 060 | 12 000 |
| LR 10 R | 900 813 | 1 mm | +6/+23 | X46Cr13 | 1.4034 | 0,18 | 3 900 | 3 700 | 800 | 12 000 |

G_a Axiale Lagerluft, jeu axial, internal axial clearance

Weg, Chemin parcouru, Distance: ① 10⁶m ② 10⁸m

Befestigungsflansch

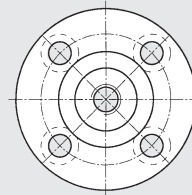
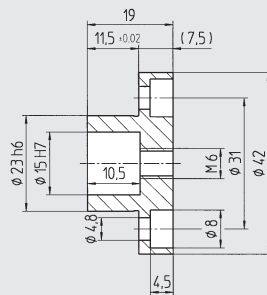
Bride de fixation

Mounting Flange

brüniert

noirçi

black oxide



DIN 912 8.8 M_A
M4x12 2,9 Nm

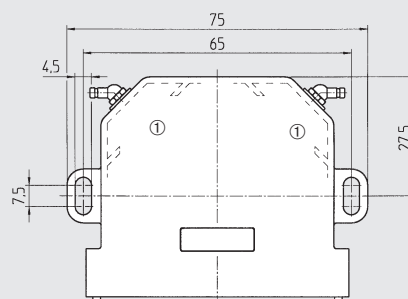
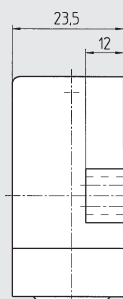
| Type | Part No. | Mat. | m (kg) |
|--------|----------|------|--------|
| SP 10 | 902 011 | Ck45 | 1.1191 |
| SPE 10 | 902 040 | Ck45 | 1.1191 |

Seite / Page 01.52

Abstreifer-Schmiereinheit

Racleur graisseur

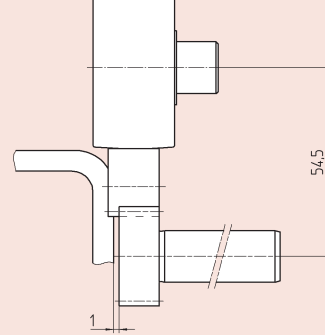
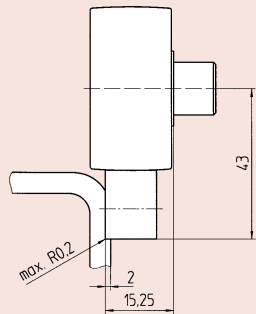
Wiper and lubrication unit



DIN 912 8.8 M_A
M4x18 2,9 Nm

① Ölgetränkter Filz
Feutre imbibé d'huile
Oil soaked felt inserts

| Type | Part No. | Mat. | m (kg) |
|--------|----------|----------|--------|
| RAL 10 | 900 045 | PA-6/POM | 0,025 |

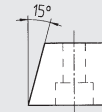
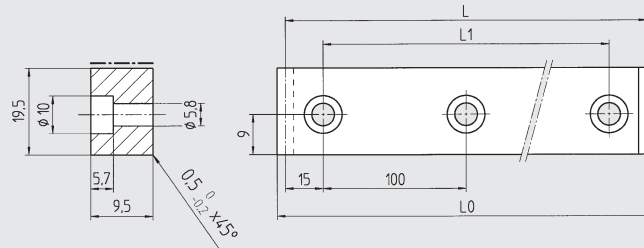


Konstruktionsabmasse
Cotes de montage
Mounting dimensions

Laufschiene

Rail de roulement

Guideway flat rail



| Type | Part No. | L | L ₀ | L ₁ | Mat. | m (kg) |
|----------|----------|-------|----------------|----------------|-----------------|--------|
| LS 100 | 900 610 | 1 030 | 1 032.55 | 1 000 | 58CrMoV4 1.7792 | 1,50 |
| | 900 611 | 630 | 632.55 | 600 | 58CrMoV4 1.7792 | 0,90 |
| | 900 612 | 330 | 332.55 | 300 | 58CrMoV4 1.7792 | 0,50 |
| LS 100 R | 901 000 | 630 | 632.55 | 600 | X46Cr13 1.4034 | 0,90 |

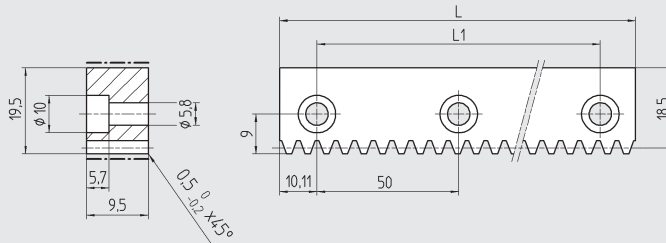
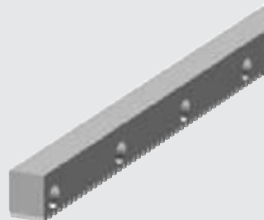


DIN 912 8.8 M_A
M5x12 5,75 Nm

Laufzahnstange

Rail crémaillère de roulement

Guideway rack



| Type | Part No. | L | L ₁ | Module | p | Mat. | m (kg) |
|---------|----------|--------|----------------|--------|-------|-----------------|--------|
| LZ 10 G | 900 056 | 870,22 | 850 | 1,0 | 3,142 | 58CrMoV4 1.7792 | 1,20 |

hart, trempé
Quality
6h23

p (mm) Teilung, pas, pitch

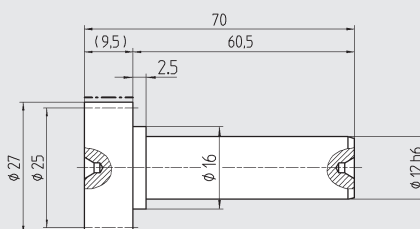
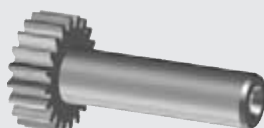


Einbau
Montage / Assembly
Seite / Page 01.71

Antriebsritzel

Pignon

Drive pinion



| Type | Part No. | z | Module | p | Mat. | m (kg) |
|---------|----------|----|--------|-------|----------------|--------|
| WR 10.1 | 201025 | 25 | 1,0 | 3,142 | 16MnCr5 1.7131 | 0,09 |

hart, trempé
Quality
6f24

p (mm) Teilung, pas, pitch