

BAUGRÖSSE Ø 90

TAILLE Ø 90

SIZE Ø 90

Rollenträger (Ausführung rechts)

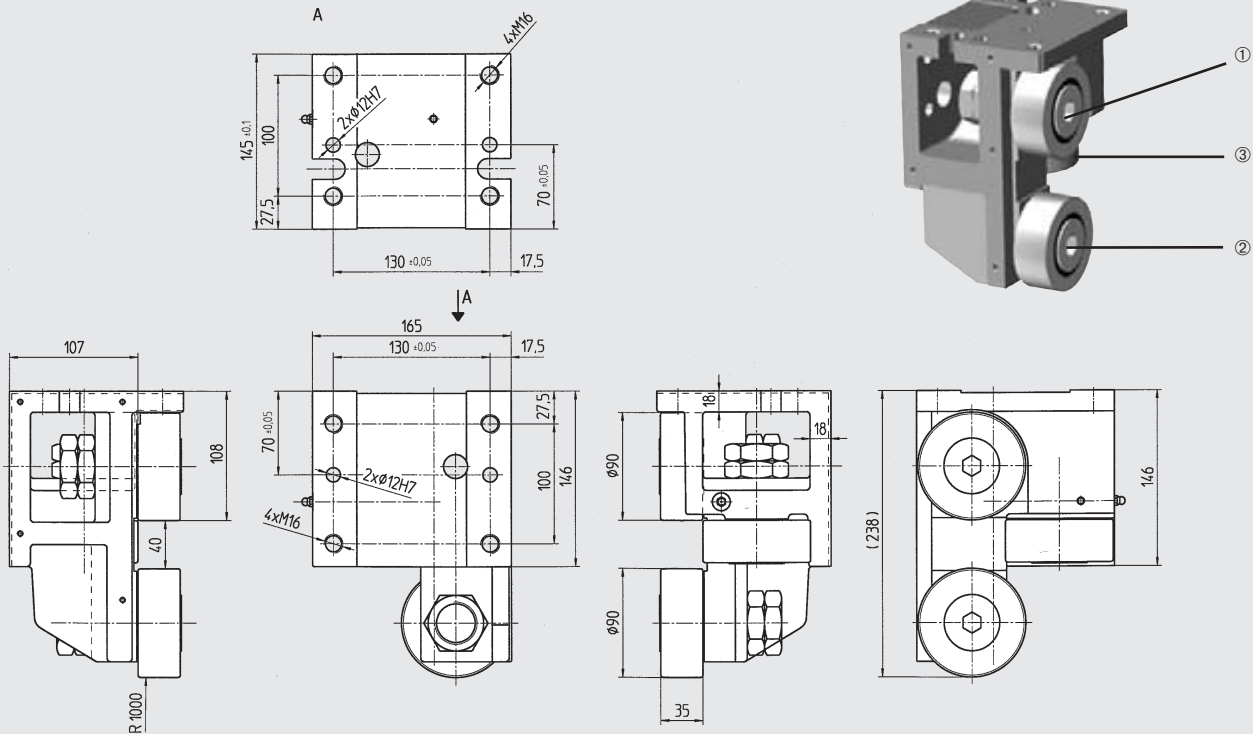
Patins à galets (Exécution droite)

Rollers support (Right hand version)

2-Komponentenlackierung RAL 9004 schwarz

Peinture en 2 composants RAL 9004 noir

2 coats of semi gloss paint RAL 9004 black



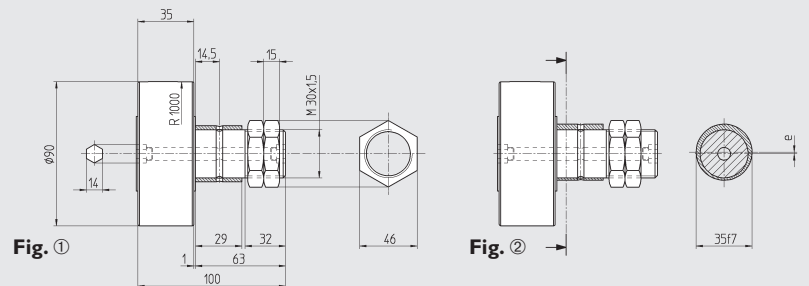
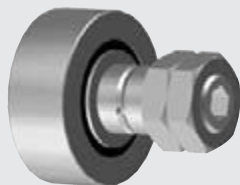
Typ	Art. No.	①	②	③	Mat.	m (kg)	Tragfähigkeit / Capacité de charge / Load carrying capacity			
							C _w (N)	C _w ^① (N)	C _w ^② (N)	n _{max} (min ⁻¹)
RB 90.1R	903 620	BR	ER	ER	GGG40	15.0	82 000	43 100	10 800	1 800
RB 90.2R	903 621	BR	ER	BR	GGG40	15.0	82 000	43 100	10 800	1 800
RB 90.3R	903 622	ER	BR	ER	GGG40	15.0	82 000	43 100	10 800	1 800

Weg, Chemin parcouru, Distance: ① 10⁶m ② 10⁸m

Stützrollen

Galets

Stud roller

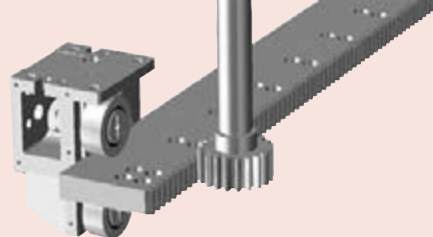
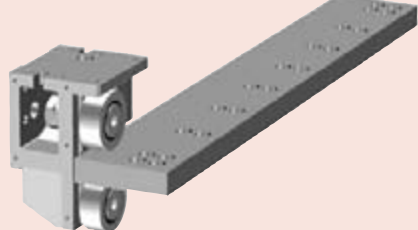


Typ	Art. No.	Fig.	e (mm)	Mat.	m (kg)	MA (Nm)
BR 90	903 623	①	—	100Cr6 1.3505	2.02	450
ER 90	903 624	②	I	100Cr6 1.3505	2.02	450

MA (Nm):
Anziehmoment der Mutter

MA (Nm):
Couple de serrage de l'écrou

MA (Nm):
Nut tightening torque



Rollenträger (Ausführung links)

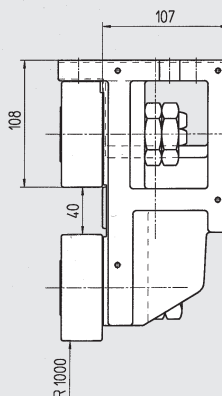
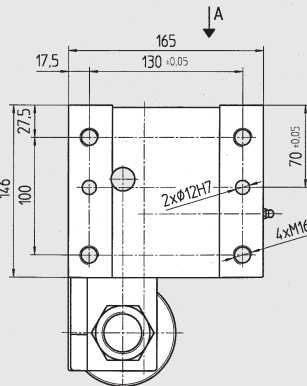
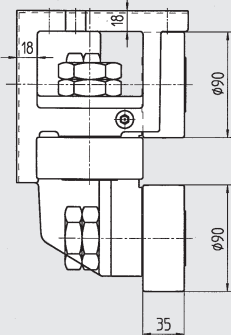
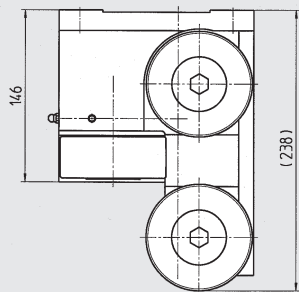
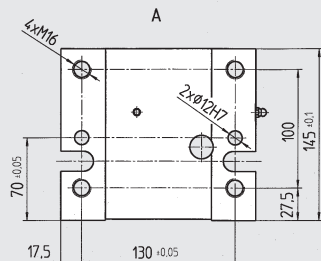
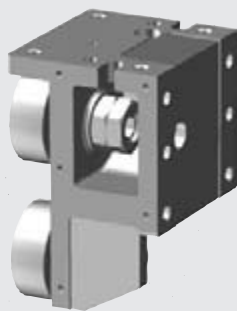
Patins à galets (Exécution gauche)

Rollers support (Left hand version)

2-Komponentenlackierung RAL 9004 schwarz

Peinture en 2 composants RAL 9004 noir

2 coats of semi gloss paint RAL 9004 black



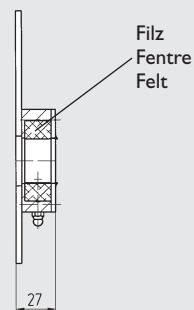
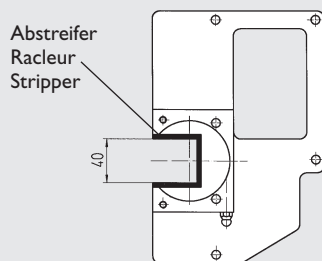
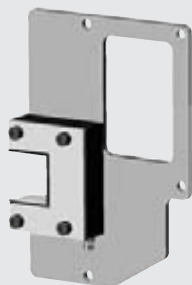
Typ	Art. No.	①	②	③	Mat.	m (kg)	Tragfähigkeit / Capacité de charge / Load carrying capacity			
							C _w (N)	C _w ^① (N)	C _w ^② (N)	n _{max} (min ⁻¹)
RB 90.1L	903 625	BR	ER	ER	GGG40	15.0	82 000	43 100	10 800	1 800
RB 90.2L	903 626	BR	ER	BR	GGG40	15.0	82 000	43 100	10 800	1 800
RB 90.3L	903 627	ER	BR	ER	GGG40	15.0	82 000	43 100	10 800	1 800

Weg, Chemin parcouru, Distance: ① 10⁶m ② 10⁸m

Abstreifer-Schmiereinheit

Racleur graisseur

Wiper and lubrication unit



Typ	Art. No.	Mat.	m (kg)
RA 90 R	903 628		0.4
RA 90 L	903 629		0.4



Ø90

BAUGRÖSSE Ø 90

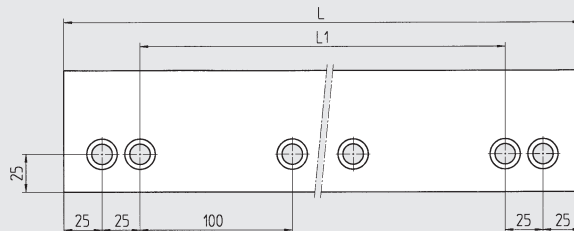
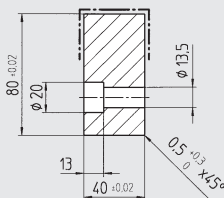
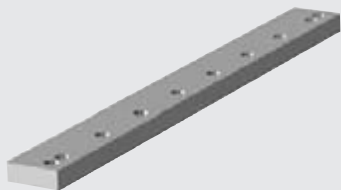
TAILLE Ø 90

SIZE Ø 90

Laufschiene

Rail de roulement

Guideway flat rail



Type	Part No.	L	L ₁	Mat.		m (kg)
S 4080	903 630	2 000	1 900	Ck60	1.1740	49.9
	903 631	1 200	1 100	Ck60	1.1740	30.0
	903 632	800	700	Ck60	1.1740	20.0

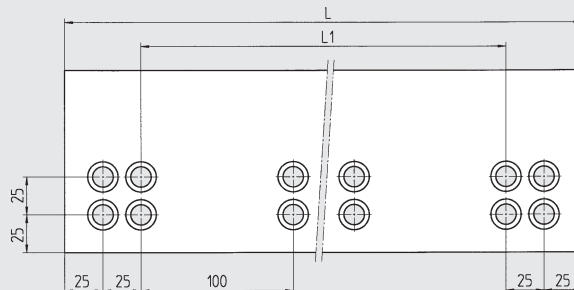
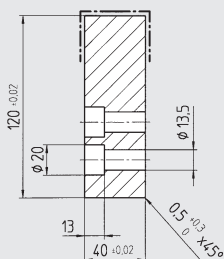
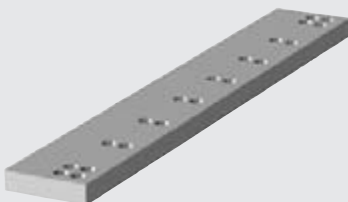


DIN 912 8.8 M_A
M12x45 83 Nm

Laufschiene

Rail de roulement

Guideway flat rail

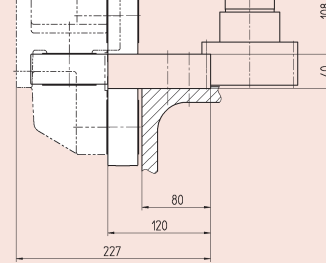
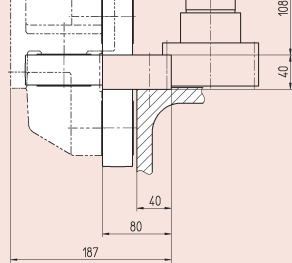


Type	Part No.	L	L ₁	Mat.		m (kg)
S 40120	903 633	2 000	1 900	Ck60	1.1740	74.8
	903 634	1 200	1 100	Ck60	1.1740	44.9
	903 635	800	700	Ck60	1.1740	29.9



DIN 912 8.8 M_A
M12x45 83 Nm

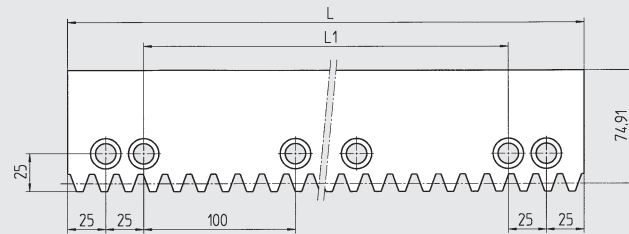
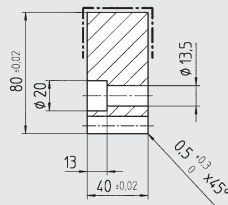
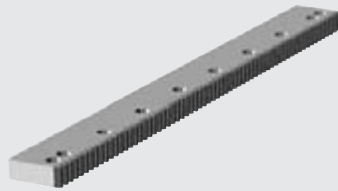
Konstruktionsabmasse
Cotes de montage
Mounting dimensions



Laufzahnstange

Rail crémaillère de roulement

Guideway rack



Einbau / Montage / Assembly
Seite / Page 02.71



DIN 912 8.8 M_A
M12x45 83 Nm

Type	Part No.	L	L ₁	Module	p	Mat.	m (kg)		F _{max} (N)	T _{max} (Nm)	
A 4080	903 636	2 000	1 900	5.0930	16.0	Ck60	1.1740	46.8	hart, trempé Quality 9h25	10 800	589
	903 637	1 200	1 100	5.0930	16.0	Ck60	1.1740	28.8			
	903 638	800	700	5.0930	16.0	Ck60	1.1740	18.7			
p (mm)	Teilung, pas, pitch										

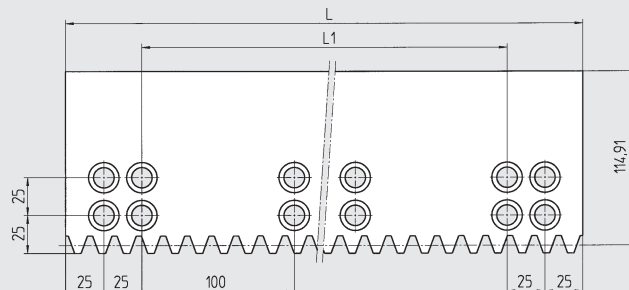
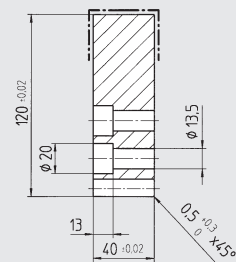
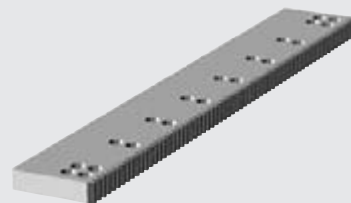


ø90

Laufzahnstange

Rail crémaillère de roulement

Guideway rack



Einbau / Montage / Assembly
Seite / Page 02.71



DIN 912 8.8 M_A
M12x45 83 Nm

Type	Part No.	L	L ₁	Module	p	Mat.	m (kg)		F _{max} (N)	T _{max} (Nm)	
A 40120	903 639	2 000	1 900	5.0930	16.0	Ck60	1.1740	71.7	hart, trempé Quality 9h25	10 800	589
	903 640	1 200	1 100	5.0930	16.0	Ck60	1.1740	43.0			
	903 641	800	700	5.0930	16.0	Ck60	1.1740	28.7			
p (mm)	Teilung, pas, pitch										

BAUGRÖSSE Ø 90

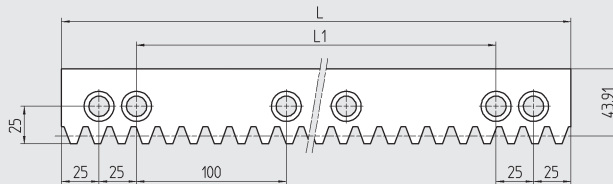
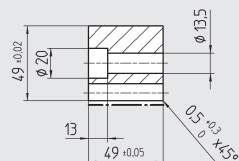
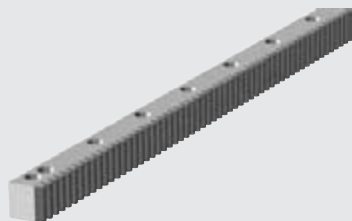
TAILLE Ø 90

SIZE Ø 90

Zahnstange

Crémaillères

Rack



Einbau / Montage / Assembly
Seite / Page 02.71



DIN 912 8.8 MA
M12x55 83 Nm

Type	Part No.	L	L _i	Module p	Mat.	m (kg)	F _{max} (N)	T _{max} (Nm)
A 4949	903 667	2 000	1 900	5.0930	16.0	58CrMoV4 1.7792 35.3	hart, trempé Quality 9h25	14 500 737
	903 668	1 200	1 100	5.0930	16.0	58CrMoV4 1.7792 21.2		
	903 669	800	700	5.0930	16.0	58CrMoV4 1.7792 14.2		
p (mm)	Teilung, pas, pitch							

Antriebsritzel

Pignon

Drive pinion

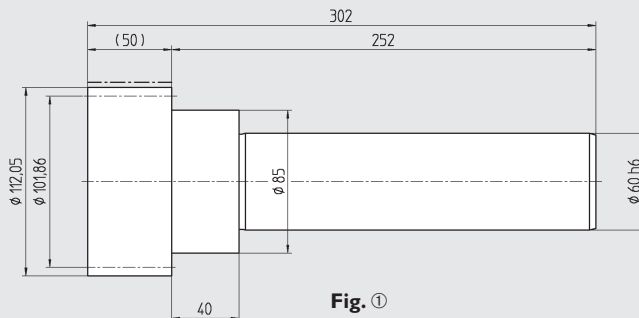


Fig. ①

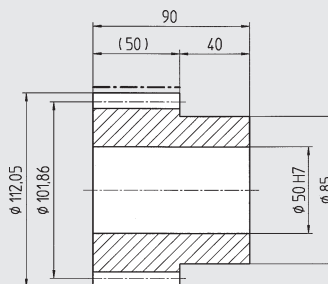


Fig. ②

Type	Part No.	z	Module p	Fig.	Mat.	m (kg)	F _{max} (N)	T _{max} (Nm)
WR 50	412 044	20	5.0930	16.0	① 16MnCr5 1.7131	9.0	hart, trempé Quality 6f24	14 500 737
MR 16	154 160	20	5.0930	16.0	② 16MnCr5 1.7131	2.5		

p (mm) Teilung, pas, pitch