

BAUGRÖSSE Ø 72

TAILLE Ø 72

SIZE Ø 72

Rollenträger (Ausführung rechts)

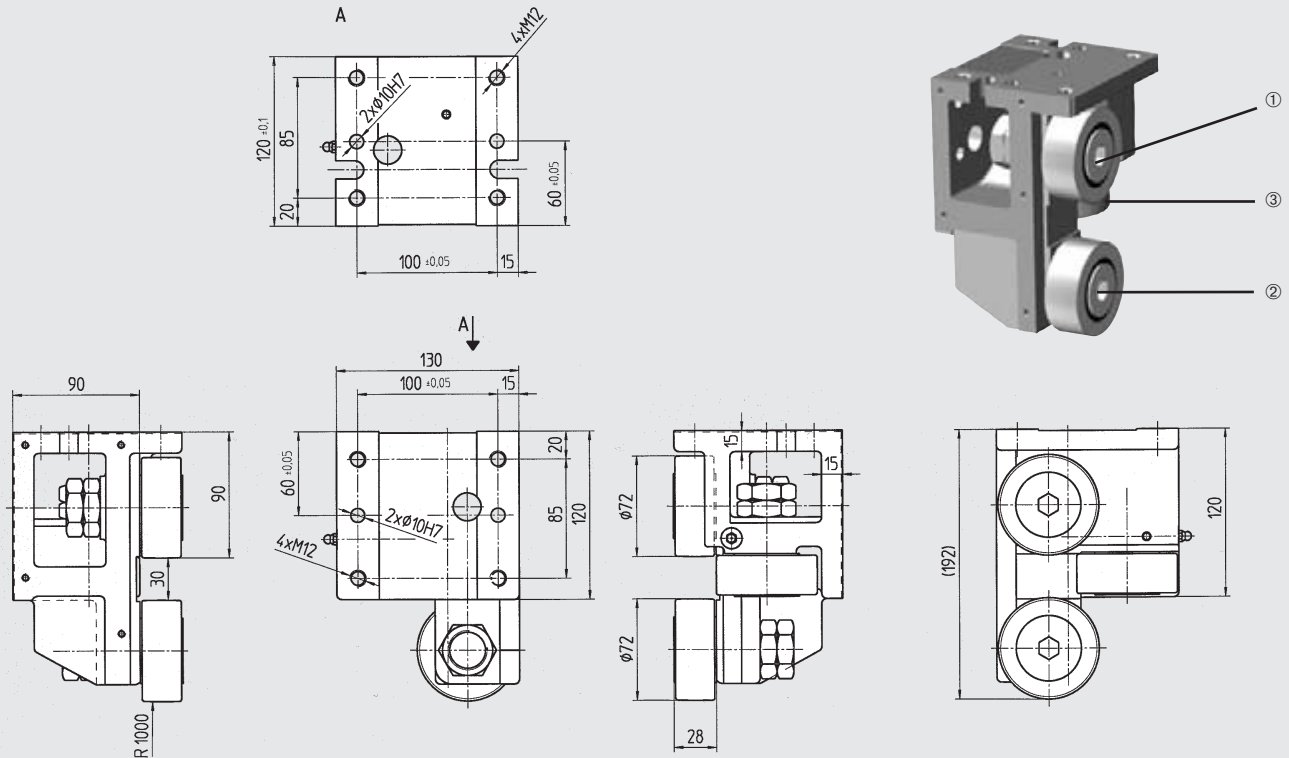
Patins à galets (Exécution droite)

Rollers support (Right hand version)

2-Komponentenlackierung RAL 9004 schwarz

Peinture en 2 composants RAL 9004 noir

2 coats of semi gloss paint RAL 9004 black



Type	Part No.	①	②	③	Mat.	m (kg)
RB 72.1R	903 590	BR	ER	ER	GGG40	9.0
RB 72.2R	903 591	BR	ER	BR	GGG40	9.0
RB 72.3R	903 592	ER	BR	ER	GGG40	9.0

Tragfähigkeit / Capacité de charge / Load carrying capacity

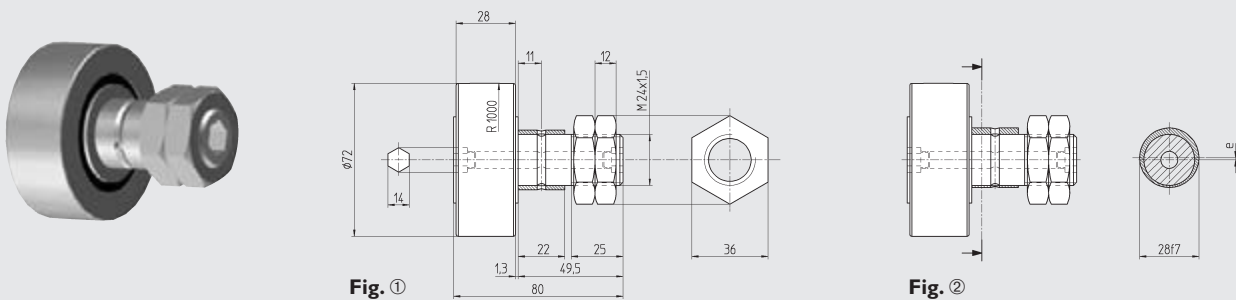
C _{0w} (N)	C _w ^① (N)	C _w ^② (N)	n _{max} (min ⁻¹)
46 500	24 600	6 200	2 200
46 500	24 600	6 200	2 200
46 500	24 600	6 200	2 200

Weg, Chemin parcouru, Distance: ① 10⁶m ② 10⁸m

Stützrollen

Galets

Stud roller

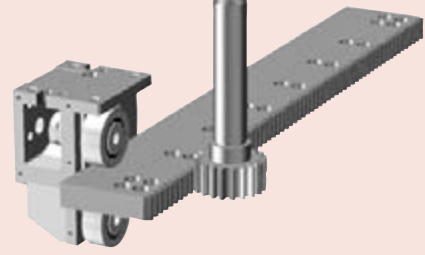
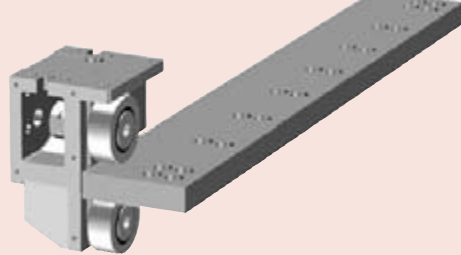


Type	Part No.	Fig.	e (mm)	Mat.	m (kg)	MA (Nm)
BR 72	903 593	①	—	100Cr6 1.3505	1.05	220
ER 72	903 594	②	I	100Cr6 1.3505	1.05	220

MA (Nm):
Anziehmoment der Mutter

MA (Nm):
Couple de serrage de l'écrou

MA (Nm):
Nut tightening torque



Rollenträger (Ausführung links)

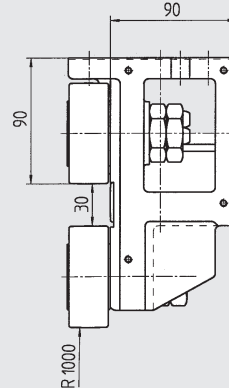
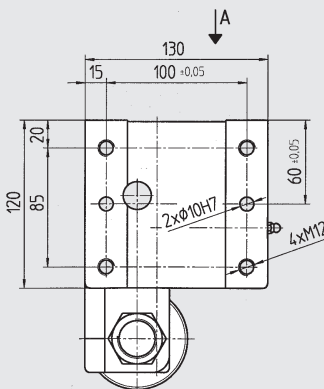
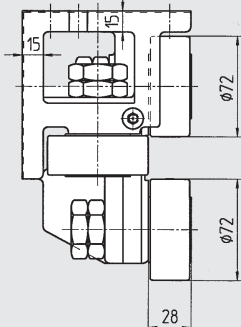
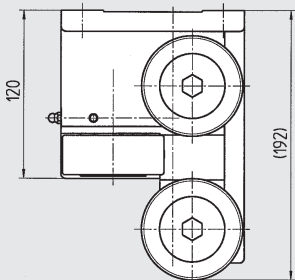
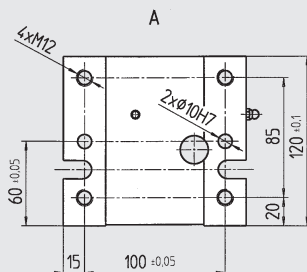
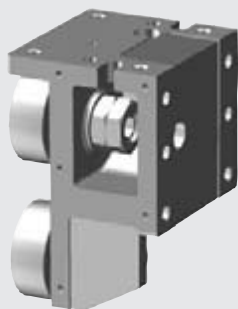
Patins à galets (Exécution gauche)

Rollers support (Left hand version)

2-Komponentenlackierung RAL 9004 schwarz

Peinture en 2 composants RAL 9004 noir

2 coats of semi gloss paint RAL 9004 black



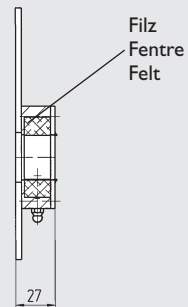
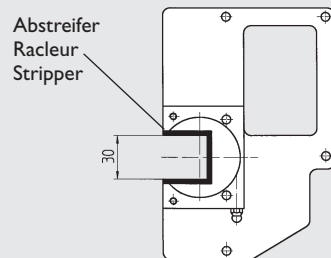
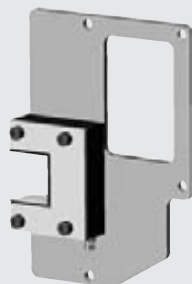
Type	Part No.				Mat.	m (kg)	Tragfähigkeit / Capacité de charge / Load carrying capacity			
		①	②	③			C _w (N)	C _w ^① (N)	C _w ^② (N)	n _{max} (min ⁻¹)
RB 72.1L	903 595	BR	ER	ER	GGG40	9.0	46 500	24 600	6 200	2 200
RB 72.2L	903 596	BR	ER	BR	GGG40	9.0	46 500	24 600	6 200	2 200
RB 72.3L	903 597	ER	BR	ER	GGG40	9.0	46 500	24 600	6 200	2 200

Weg, Chemin parcouru, Distance: ① 10⁶m ② 10⁸m

Abstreifer-Schmiereinheit

Racleur graisseur

Wiper and lubrication unit



Type	Part No.	m (kg)
RA 72 R	903 598	0.3
RA 72 L	903 599	0.3



ø72

BAUGRÖSSE Ø 72

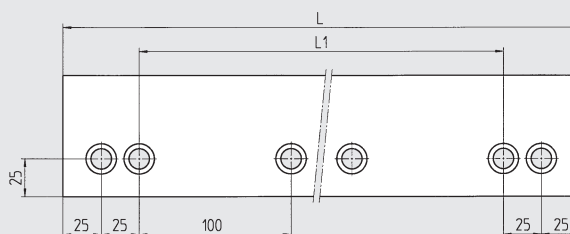
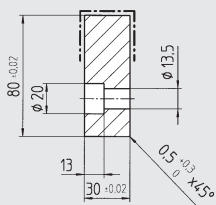
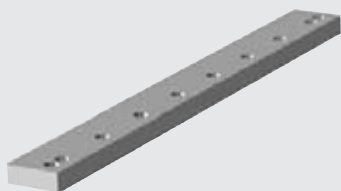
TAILLE Ø 72

SIZE Ø 72

Laufschiene

Rail de roulement

Guideway flat rail



Type	Part No.	L	L ₁	Mat.	m (kg)	
S 3080	903 600	2 000	1 900	58CrMoV4	1.7792	34,7
	903 601	1 200	1 100	58CrMoV4	1.7792	20,8
	903 602	800	700	58CrMoV4	1.7792	15,0

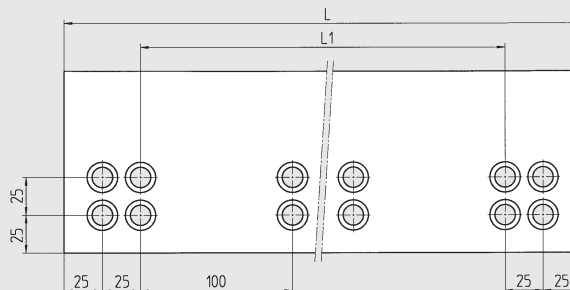
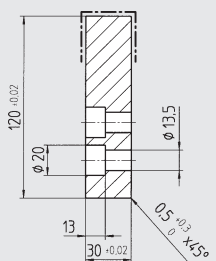
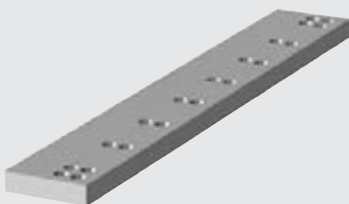


DIN 912 8.8 M_A
M12x35 83 Nm

Laufschiene

Rail de roulement

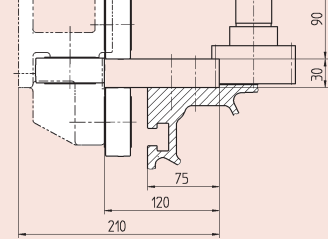
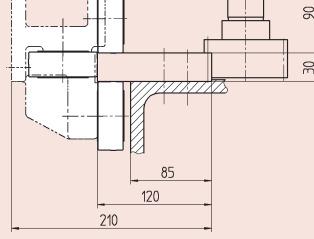
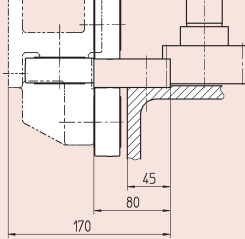
Guideway flat rail



Type	Part No.	L	L ₁	Mat.	m (kg)	
S 30120	903 603	2 000	1 900	Ck60	1.1740	56,1
	903 604	1 200	1 100	Ck60	1.1740	33,7
	903 605	800	700	Ck60	1.1740	22,5



DIN 912 8.8 M_A
M12x35 83 Nm

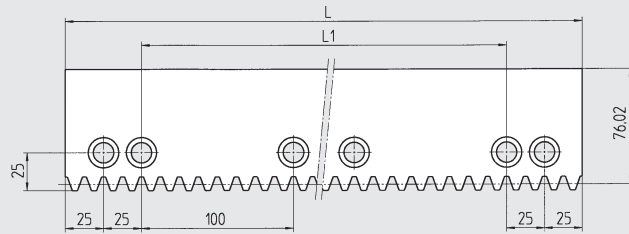
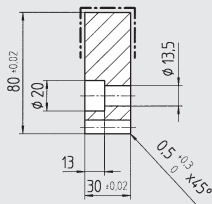
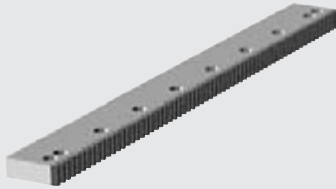


Konstruktionsabmasse
Cotes de montage
Mounting dimensions

Laufzahnstange

Rail crémaillère de roulement

Guideway rack



Einbau / Montage / Assembly
Seite / Page 02.71



DIN 912 8.8 MA
M12x35 83 Nm

Type	Part No.	L	L ₁	Module	p	Mat.	m (kg)		F _{max} (N)	T _{max} (Nm)	
A 3080	903 606	2 000	1 900	3.979	12.5	58CrMoV4	1.7792	35,6	<div style="border: 1px solid black; padding: 2px;"> hart, trempé Quality 9h25 </div>	6 370	253
	903 607	1 200	1 100	3.979	12.5	58CrMoV4	1.7792	21,4		6 370	253
	903 608	800	700	3.979	12.5	58CrMoV4	1.7792	14,3		6 370	253
p (mm)	Teilung, pas, pitch										

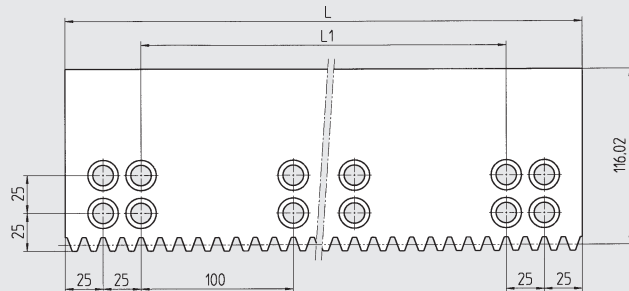
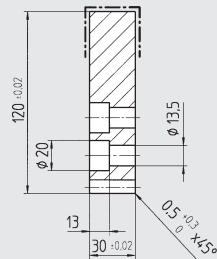
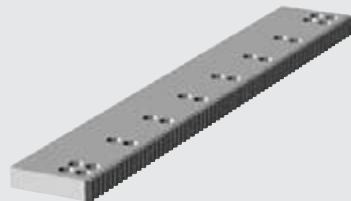


ø72

Laufzahnstange

Rail crémaillère de roulement

Guideway rack



Einbau / Montage / Assembly
Seite / Page 02.71



DIN 912 8.8 MA
M12x35 83 Nm

Type	Part No.	L	L ₁	Module	p	Mat.	m (kg)		F _{max} (N)	T _{max} (Nm)	
A 30120	903 609	2 000	1 900	3.979	12.5	Ck60	1.1740	54,3	<div style="border: 1px solid black; padding: 2px;"> hart, trempé Quality 9h25 </div>	6 370	253
	903 610	1 200	1 100	3.979	12.5	Ck60	1.1740	32,6		6 370	253
	903 611	800	700	3.979	12.5	Ck60	1.1740	21,7		6 370	253
p (mm)	Teilung, pas, pitch										

BAUGRÖSSE Ø 72

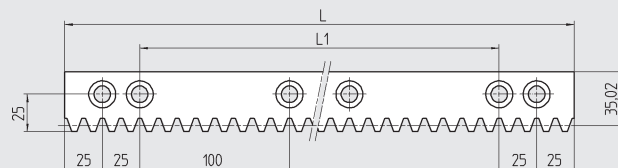
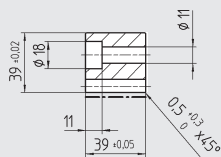
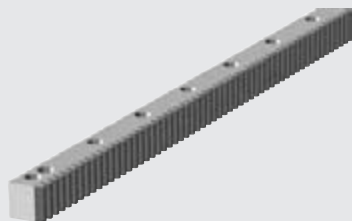
TAILLE Ø 72

SIZE Ø 72

Zahnstange

Crémaillères

Rack



Einbau / Montage / Assembly
Seite / Page 02.71



DIN 912 8.8 M_A
M10x45 48 Nm

Type	Part No.	L	L _i	Module	p	Mat.	m (kg)	F _{max} (N)	T _{max} (Nm)
A 3939	903 526	2 000	1 900	3.9789	12.5	58CrMoV4	1.7792 22.5	8 500	337
	903 527	1 200	1 100	3.9789	12.5	58CrMoV4	1.7792 13.5		
	903 528	800	700	3.9789	12.5	58CrMoV4	1.7792 9.8		
p (mm)	Teilung, pas, pitch								

Antriebsritzel

Pignon

Drive pinion

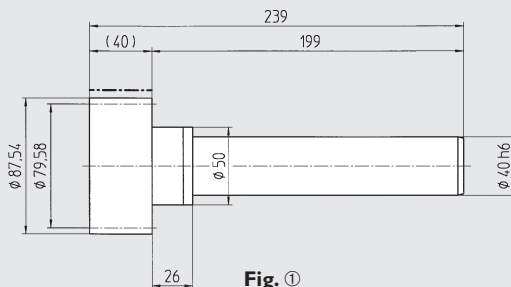


Fig. ①

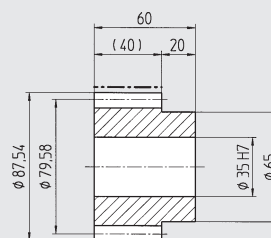


Fig. ②

Type	Part No.	z	Module	p	Fig.	Mat.	m (kg)	F _{max} (N)	T _{max} (Nm)	
WR 40.3	409 042	20	3.9789	12.5	①	16MnCr5 1.7131	6.0	8 500	337	
MR 12.5	154 125	20	3.9789	12.5	②	16MnCr5 1.7131	1.8			
								hart, trempé		
								Quality 9h25		
								Quality 6f24		

p (mm) Teilung, pas, pitch