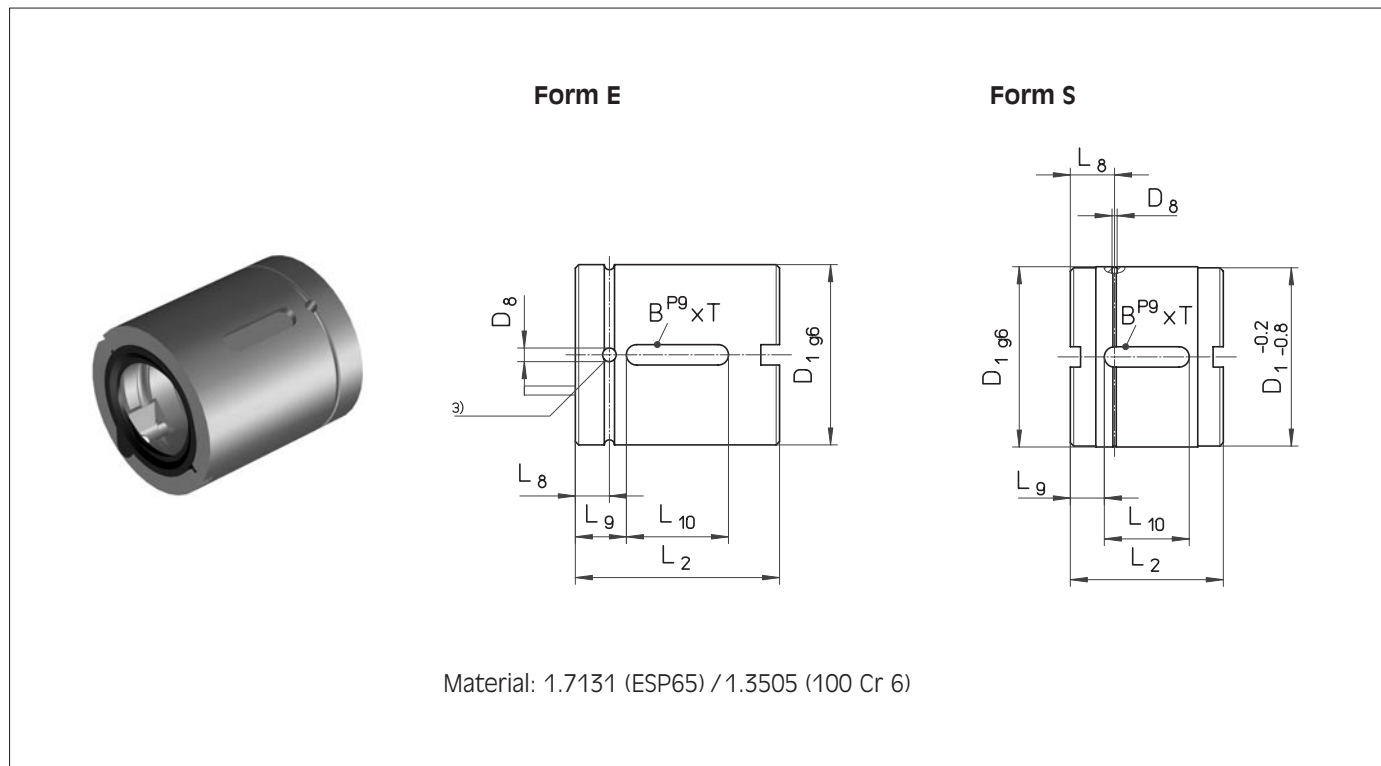


Ball screw drives

Cylindrical ball nuts KGM-D according to DIN 69051



Type Diameter [mm] Lead [mm] Right hand thread	Form	Dimensions [mm]							Axial backlash max [mm]	No. of circuits	Load rating [kN]		
		D ₁	D ₈	L ₂	L ₈	L ₉	L ₁₀	BxT			C ¹⁾	C ²⁾	C ₀ =C _{0a}
KGM-D 1605 RH-EE	E	28	3	34	7	7	20	5x2	0.08	3	12.5	9.3	13.1
KGM-D 1610 RH-EE	E	28	3	50	7	15	20	5x2	0.08	6	23.0	15.4	26.5
KGM-D 2005 RH-EE	E	36	3	34	7	7	20	5x2	0.08	3	14.0	10.5	16.6
KGM-D 2505 RH-EE	E	40	3	34	7	7	20	5x2	0.08	3	15.0	12.3	22.5
KGM-D 2510 RH-EE	E	40	3	45	7.5	12.5	20	5x2	0.08	3	17.5	13.2	25.3
KGM-D 2520 RH-EE	S	40	1.5	35	14	11.5	12	5x3	0.15	4	19.0	13.0	23.3
KGM-D 2525 RH-EE	S	40	1.5	35	11.5	11	13	5x3	0.08	5	21.0	16.7	32.2
KGM-D 2550 RH-EE	S	40	1.5	58	17	19	20	5x3	0.15	5	22.5	15.4	31.7
KGM-D 3205 RH-EE	E	50	3	45	7.5	8	30	6x2.5	0.08	5	24.0	21.5	49.3
KGM-D 4005 RH-EE	E	63	3	45	7.5	8	30	6x2.5	0.08	5	26.0	23.8	63.1
KGM-D 4010 RH-EE	E	63	4	60	10	15	30	6x2.5	0.08	3	50.0	38.0	69.1
KGM-D 4020 RH-EE	E	63	3	70	7.5	20	30	6x2.5	0.08	4	44.5	33.3	76.1
KGM-D 4040 RH-EE	S	63	1.5	85	15	27.5	30	6x3.5	0.08	8	42.0	35.0	101.9
Left hand thread													
KGM-D 2005 LH-EE	E	36	3	34	7	7	20	5x2	0.08	3	16.5	10.5	16.6

¹⁾ Dynamic load rating according to DIN 69051, part 4, draft 1978.

²⁾ Dynamic load rating according to DIN 69051, part 4, draft 1989.

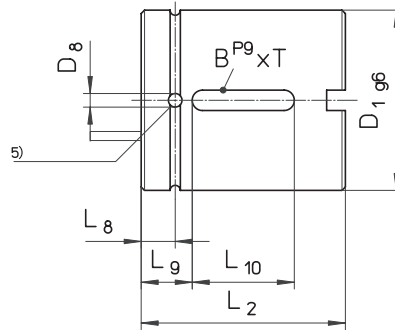
³⁾ Position of grease holes not defined on circumference.

Ball screw drives

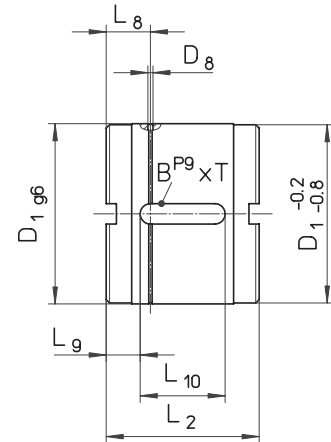
Cylindrical ball nuts KGM-N according to NEFF standard



Form E



Form S



Material: 1.7131 (ESP65) / 1.3505 (100 Cr 6)

Type Diameter [mm] Lead [mm] Right hand thread	Form	Dimensions [mm]							Axial backlash max [mm]	No. of circuits	Load rating [kN]		
		D ₁	D ₈	L ₂	L ₈	L ₉	L ₁₀	BxT			C ²⁾	C ³⁾	C ₀ =C _{0a}
KGM-N 1205 RH-00	E	20 ⁴⁾	-	24	-	5	14	3x1.8	0.08	3	6.0	4.4	6.8
KGM-N 2005 RH-EE	E	32	3	34	7	7	20	5x2	0.08	3	14.0	10.5	16.6
KGM-N 2020 RH-EE	S	35	1.5	30	11.5	9	12	5x3	0.08	4	12.0	11.6	18.4
KGM-N 2050 RH-EE	S	35	1.5	56	16	18	20	5x3	0.15	5	18.0	13.0	24.6
KGM-N 2505 RH-EE	E	38	3	34	7	7	20	5x2	0.08	3	15.0	12.3	22.5
KGM-N 3205 RH-EE	E	45	3	45	7.5	8	30	6x2.5	0.08	5	24.0	21.5	49.3
KGM-N 3210 RH-EE	E	53	4	60	10	15	30	6x2.5	0.08	3	44.0	33.4	54.5
KGM-N 3220 RH-EE	E	53	3	70	7.5	20	30	6x2.5	0.08	4	42.5	29.7	59.8
KGM-N 3240 RH-EE	S	53 ¹⁾	1.5	45	13	10	25	6x4	0.08	4	17.0	14.9	32.4
KGM-N 4005 RH-EE	E	53	3	45	7.5	8	30	6x2.5	0.08	5	26.0	23.8	63.1
KGM-N 5010 RH-EE	E	72	4	82	11	23	36	6x2.5	0.08	5	78.0	68.7	155.8
KGM-N 5020 RH-EE	E	85	4	82	10	23	36	6x2.5	0.08	4	82.0	60.0	136.3
KGM-N 6310 RH-EE	E	85	4	82	11	23	36	6x2.5	0.08	5	86.0	76.0	197.0

¹⁾ D₁ -0.2/-0.8 does not apply, therefore D₁ -1.0/-1.5

²⁾ Dynamic load rating according to DIN 69051, part 4, draft 1978.

³⁾ Dynamic load rating according to DIN 69051, part 4, draft 1989.

⁴⁾ Nut without wiper

⁵⁾ Position of grease holes not defined on circumference.