

## Material

The performance of timing belts is highly dependent on the quality of the pulleys used. For this reason we recommend that you use BRECOflex CO., L.L.C. pulleys in conjunction with BRECO and BRECOFLEX timing belts. This will assure proper performance in your applications.

Aluminum: For normal requirements pulleys made of aluminum are recommended. Stock pulleys and pulley bar stock are also made of aluminum. Custom pulleys made of aluminum can be supplied hard lube anodized.

Steel: For high-torque applications and pulleys running in abrasive environments (sand, cullets, metal chips, etc.) steel pulleys are recommended.

Stainless Steel: Certain applications cannot tolerate rust. In these cases stainless steel pulleys are suggested.

Delrin • Nylon: For applications requiring light weight and rust-free operation, pulleys made of Delrin, Nylon or other plastic materials are offered.

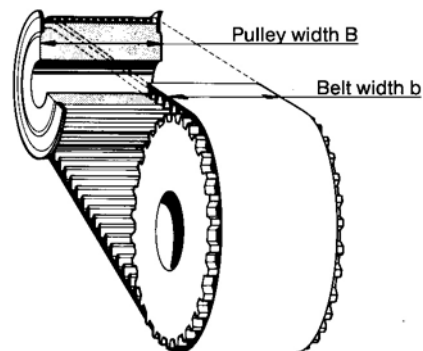
Note: Pulleys can be made in most commonly available materials. Please contact us for special requirements.

## Flanges

Standard flanges are supplied in steel zinc plate. Other materials are available and must be specified.

Preferably, flanges are to be specified on the small pulley.

The flanges are attached to the pulleys by rolling or fastened by screws, depending on tooth profile and number of teeth.



## Custom Pulleys

Besides standard pulleys in English and metric pitches, we also manufacture pulleys based on your specific requirements and drawings.

A drawing of a custom pulley is shown with additional machining operations.

## Flat Idlers

For tensioning and support functions, flat idlers are offered in many materials and configurations. Send us your specifications and drawings for a quotation.

## Bores

Pulleys are offered in many bore configurations:

- Pilot bore
- Finished bore
- Bores for QD Bushings
- Bores for Taper Lock Bushings
- Counter bores

## Materials

Aluminum and steel are the most frequently used materials for flat idlers and pulleys. We manufacture these in most commonly available materials. The following is a partial listing of materials used (various grades available).

- Aluminum
- Aluminum hard lube anodized
- Delrin
- Nylon
- Steel
- Stainless Steel

Other materials or grades upon request.

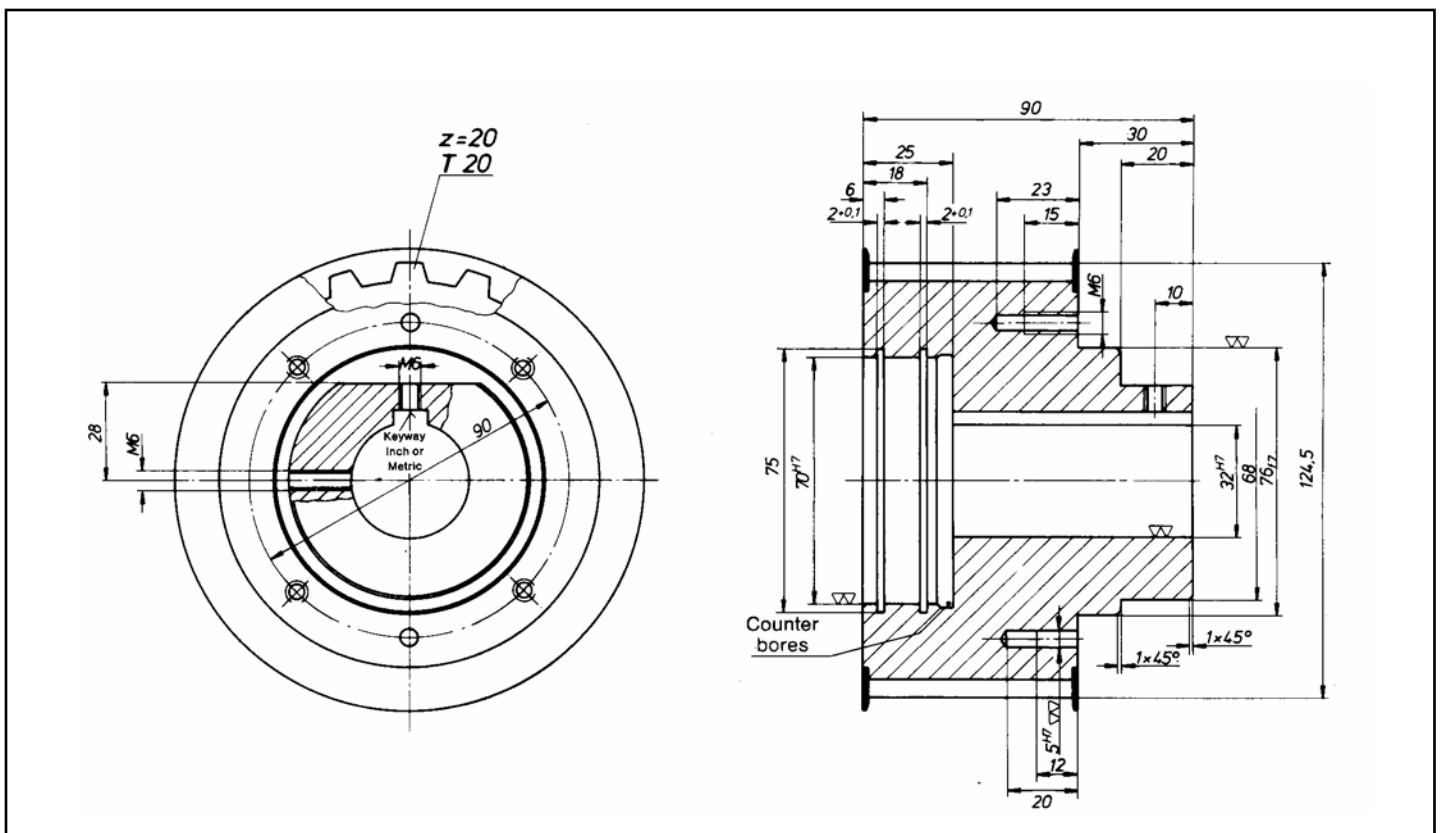
## Max. Pulley Sizes

Pulleys and idlers are available up to the following dimensions:

- Max. Width: 180 mm
- Max. Diameter: 640 mm

## Note:

If you need unusual or complex pulley configurations, please send us your specifications and drawings.

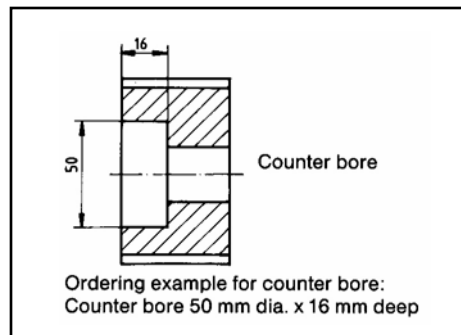
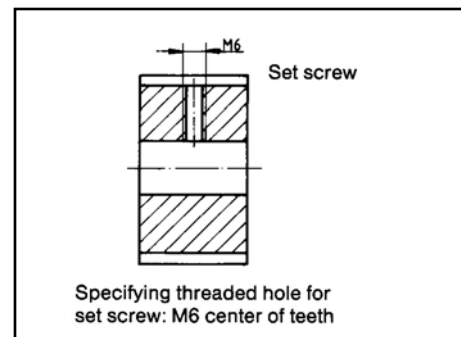
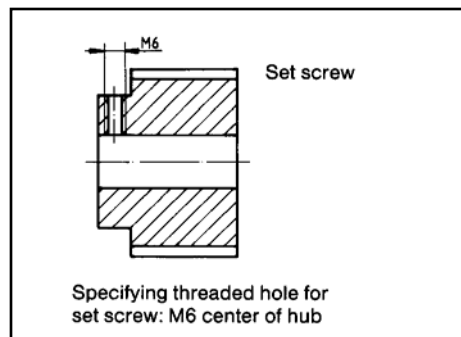
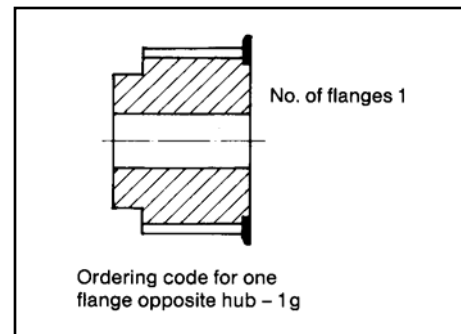
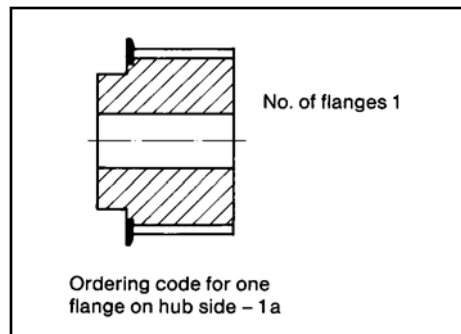
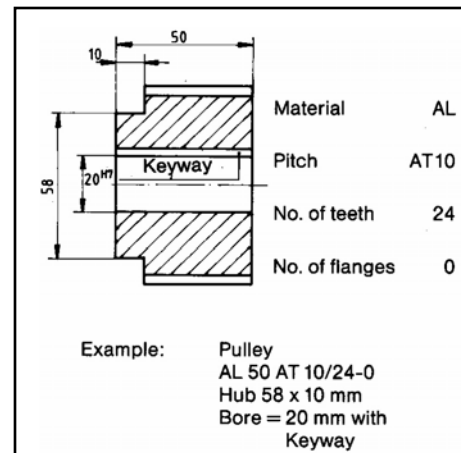
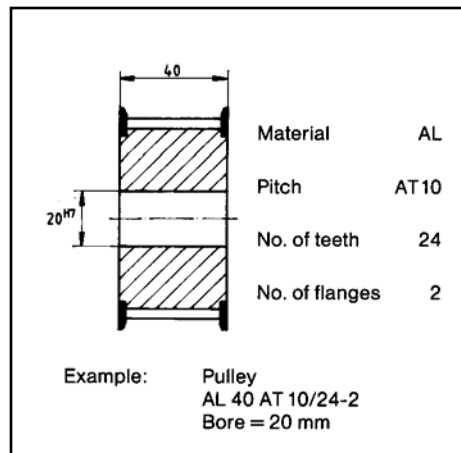


## Ordering Examples

(Standard pulleys see page 8)

The configurations of a timing belt pulley can be specified based on the following examples.

Note: Keyways, set screws, bores, dimensions etc. can be specified in either English or metric measurements to meet your individual requirements.



For more complex pulley designs, please submit drawings.