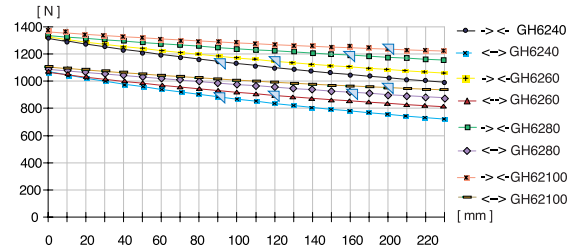


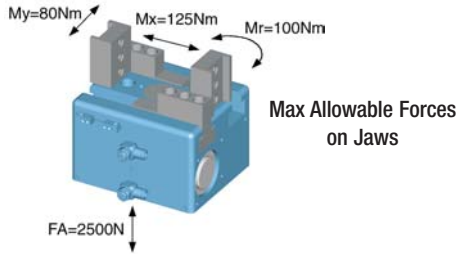
Long-stroke gripper with T-slot guide

Advantages, benefits, comparisons and tips! Stacks of information all about this product are on page 87.

Gripping force as a function of jaw length



Colored area: increased wear and tear to be expected



Order no.:

GH6240	GH6260	GH6280	GH62100

Drive:

pneum.	pneum.	pneum.	pneum.

Stroke per jaw [mm]:

40	60	80	100

Gripping force in closing [N]:

1060	1060	1060	1080

Gripping force in opening [N]:

1275	1275	1275	1320

Self-locking via:

DSV1/8	DSV1/8	DSV1/8	DSV1/8

Closing time/opening time [s]:

0,4	0,5	0,5	0,65

Repeatability ± [mm]:

0,05	0,05	0,05	0,05

Min./max. operating pressure [bar]:

4 / 10	4 / 10	4 / 10	

Air volume per cycle [cm³]:

185	275	370	460

Min./max. operating temperature [°C]:

5 / 80	5 / 80	5 / 80	5 / 80

Temp. resistant version up to 150° C [add to part number]:

T3	T3	T3	T3

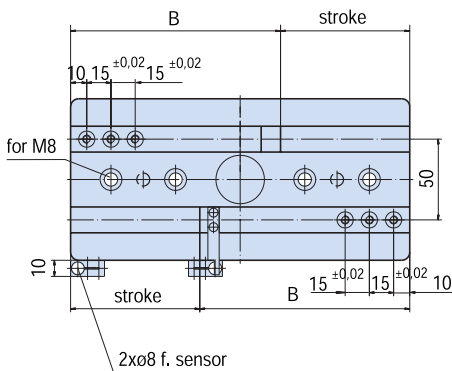
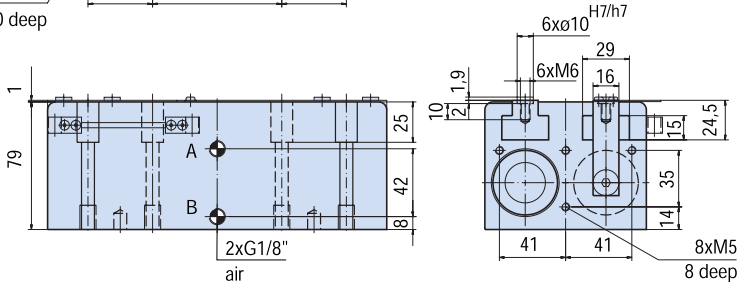
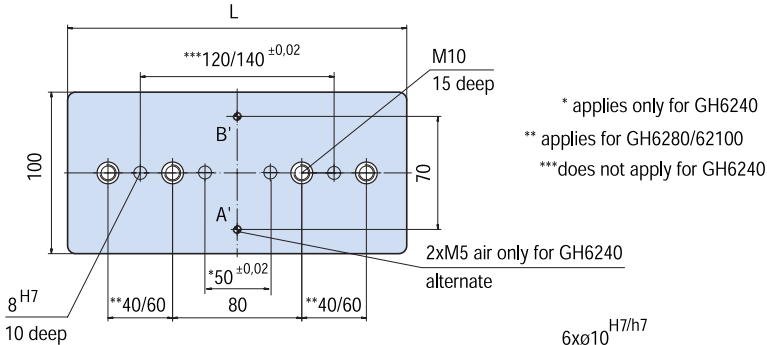
Piston diameter [mm]:

40	40	40	40

Weight [kg]:

3,5	4,1	4,8	5,8

All data measured at 6 bar.



	Stroke	B	L
GH6240	40	90	130
GH6260	60	110	170
GH6280	80	130	210
GH62100	100	150	250