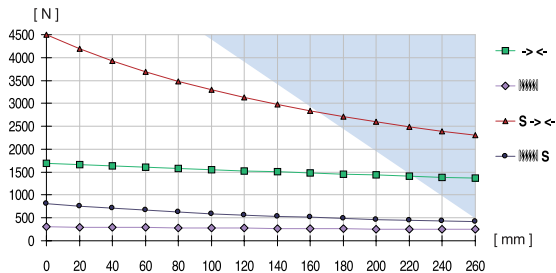


Parallel gripper with sealed square guide

Advantages, benefits, comparisons and tips!
Stacks of information all about this product are
on page 47.

Gripping force as a function of jaw length

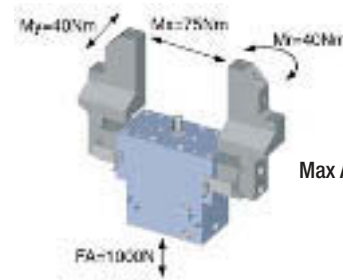
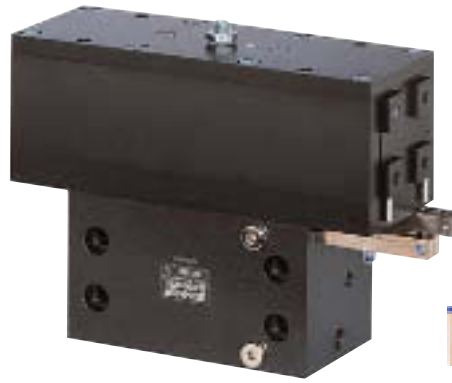


Colored area: increased wear and tear to be expected

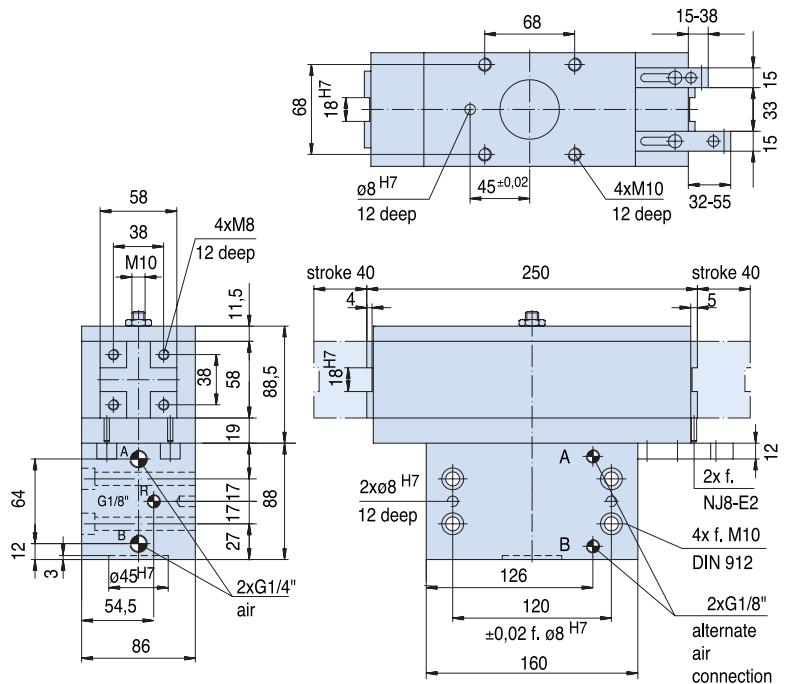
| Order no.: | | | | |
|--|---------|-----------|------------|--|
| GP280 | GP280 S | GP280 /99 | GP280 S/99 | |
| Drive: | | | | |
| pneum. | pneum. | pneum. | pneum. | |
| Stroke per jaw [mm]: | | | | |
| 40 | 15 | 40 | 15 | |
| Gripping force in closing and opening [N]: | | | | |
| - | - | 1390 | 3690 | |
| Gripping force in closing [N]: | | | | |
| 1690 | 4500 | - | - | |
| Self-locking via: | | | | |
| Spring | Spring | DSV1/8 | DSV1/8 | |
| Closing time/opening time [s]: | | | | |
| 0,25 | 0,25 | 0,2 | 0,2 | |
| Repeatability ± [mm]: | | | | |
| 0,05 | 0,05 | 0,05 | 0,05 | |
| Min./max. operating pressure [bar]: | | | | |
| 5 / 10 | 5 / 10 | 5 / 10 | 5 / 10 | |
| Air volume per cycle [cm³]: | | | | |
| 300 | 300 | 300 | 300 | |
| Min./max. operating temperature [°C]: | | | | |
| 5 / 80 | 5 / 80 | 5 / 80 | 5 / 80 | |
| Temp. resistant version up to 150° C [add to part number]: | | | | |
| T3 | T3 | T3 | T3 | |
| Piston diameter [mm]: | | | | |
| 70 | 70 | 70 | 70 | |
| Weight [kg]: | | | | |
| 8,28 | 8,28 | 8,28 | 8,28 | |

All data measured at 6 bar.

See Page 47 for Accessory list.



Max Allowable Forces on Jaws



GP280S

