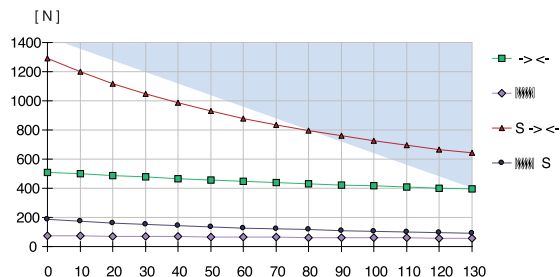


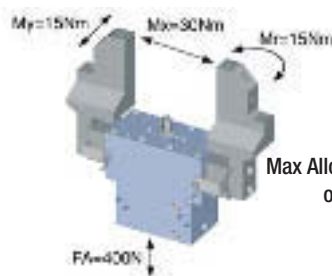
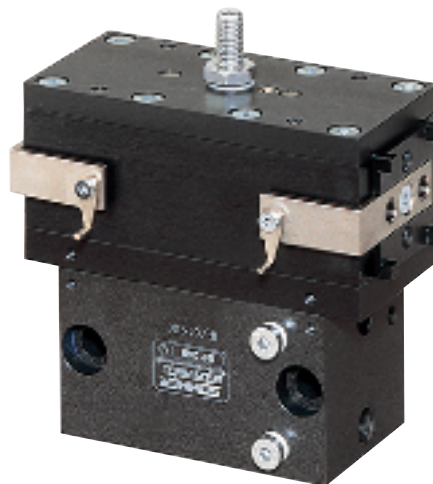
Parallel gripper with sealed square guide

Advantages, benefits, comparisons and tips!
Stacks of information all about this product are
on page 47.

Gripping force as a function of jaw length



Colored area: increased wear and tear to be expected

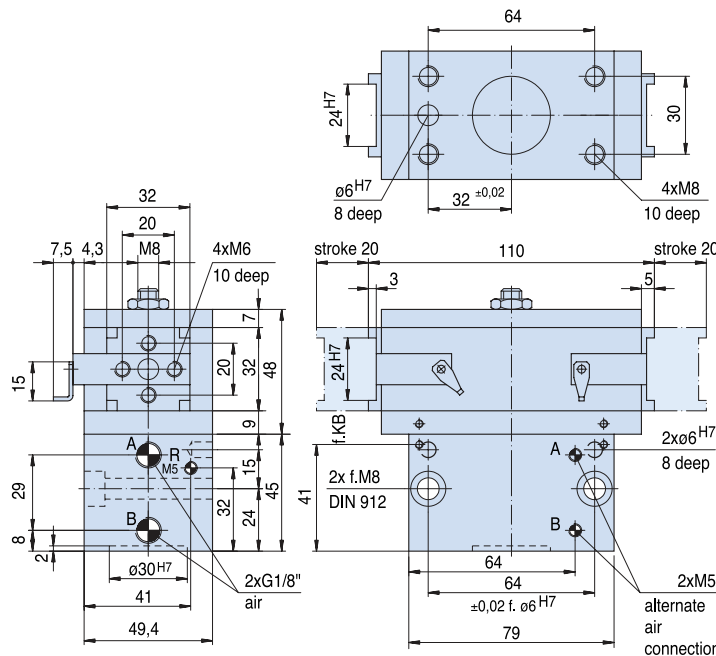


Max Allowable Forces
on Jaws

Order no.:				
GP240	GP240 S	GP240 /99	GP240 S/99	
Drive:				
pneum.	pneum.	pneum.	pneum.	
Stroke per jaw [mm]:				
20	8	20	8	
Gripping force in closing and opening [N]:				
-	-	435	1105	
Gripping force in closing [N]:				
510	1290	-	-	
Self-locking via:				
Spring	Spring	DSV1/8	DSV1/8	
Closing time/opening time [s]:				
0,15	0,15	0,12	0,12	
Repeatability ± [mm]:				
0,05	0,05	0,05	0,05	
Min./max. operating pressure [bar]:				
5 / 8	5 / 8	5 / 8	5 / 8	
Air volume per cycle [cm³]:				
49	49	49	49	
Min./max. operating temperature [°C]:				
5 / 80	5 / 80	5 / 80	5 / 80	
Temp. resistant version up to 150° C [add to part number]:				
T3	T3	T3	T3	
Piston diameter [mm]:				
40	40	40	40	
Weight [kg]:				
1,16	1,16	1,16	1,16	

All data measured at 6 bar.

See Page 47 for Accessory list.



GP240S

