

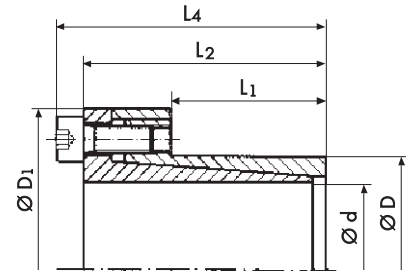
# Locking Assembly PSV 2010.1



## Advantages

- very small cross section
- limited contact surface pressure
- thin hubs with smaller outside diameters

Shaft sizes up to 120 mm  
Torque up to 23.200 Nm



## Technical Data and Dimensions

Locking Assembly Dimensions						Transmissible Torque T Nm	Axial Force $F_{ax}$ kN	Contact surface pressure between locking assembly and Shaft		Locking screws G DIN 912	Tightening torque of screws $T_A$ Nm
Ø d mm	Ø D mm	Ø D <sub>1</sub> mm	L <sub>1</sub> mm	L <sub>2</sub> mm	L <sub>4</sub> mm			P <sub>w</sub> N/mm <sup>2</sup>	P <sub>N</sub> N/mm <sup>2</sup>		
8	15	32	12	24	28	30	72	190	110	M4	5
9	16	32	14	27	31	30	72	150	90	M4	5
10	16	32	14	27	31	40	9	140	90	M4	5
11	18	34	14	27	31	50	9	180	110	M4	5
12	18	34	14	27	31	55	9	160	110	M4	5
14	23	39	14	27	31	60	9	140	80	M4	5
15	24	45	16	36	42	100	13	160	100	M6	5
16	24	45	16	36	42	110	13	150	100	M6	17
18	26	47	18	38	44	160	18	160	110	M6	17
19	27	48	18	38	44	170	18	150	110	M6	17
20	28	49	18	38	44	170	21	140	100	M6	17
22	32	54	25	45	51	230	21	110	80	M6	17
24	34	56	25	45	51	250	21	100	70	M6	17
25	34	56	25	45	51	260	21	100	70	M6	17
28	39	61	25	45	51	370	31	110	80	M6	17
30	41	63	25	45	51	470	31	120	90	M6	17
32	43	65	30	50	56	510	31	100	70	M6	17
35	47	69	30	50	56	740	42	120	90	M6	17
38	50	72	30	50	56	800	42	110	80	M6	17
40	53	75	32	52	58	950	53	110	80	M6	17
42	55	77	32	52	70	990	78	100	80	M8	42
45	59	85	40	64	72	1.800	78	130	100	M8	42
48	62	88	40	64	72	1.900	78	120	90	M8	42
50	65	92	50	74	82	2.400	97	120	100	M8	42
55	71	98	50	74	82	2.700	97	100	80	M8	42
60	77	104	50	74	82	3.000	97	100	80	M8	42
65	84	111	50	74	82	3.200	97	90	70	M8	42
70	90	122	60	91	101	4.300	123	90	70	M10	84
75	95	126	60	91	101	6.200	197	90	70	M10	84
80	100	131	65	96	106	7.900	237	100	80	M10	84
85	106	137	65	96	106	8.400	237	90	70	M10	84
90	112	143	65	96	106	10.400	276	100	50	M10	84
120	155	195	90	127	139	23.200	465	90	70	M12	145

Additional diameters available upon request. Technical Specifications subject to change without notice.

### Order data:

**20 x 28 PSV 2010.1**  
d x D Type

### Applications

- pulleys
- packaging machines
- textile machinery
- automation and handling equipment
- similar applications requiring transmission of high torque values and limited surface pressure

### Technical Details

- self-centering
- tolerances H8/h8
- surface roughness  $R_f$  max 16µm for shaft and hub