

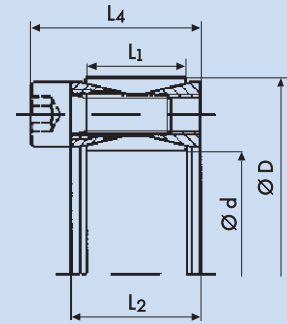


Stainless steel

Advantages

- food grade stainless steel
- corrosion protection
- flexibel use

Shaft sizes up to 110 mm
Torque up to 4.260 Nm



Stainless steel

Technical Data and Dimensions

Locking Assembly Dimensions					Transmissible Torque T Nm	Axial Force F _{ax} kN	Contact surface pressure between locking assembly and Shaft		Locking screws G DIN 912	Tightening torque of screws T _A Nm
Ø d mm	Ø D mm	L ₁ mm	L ₂ mm	L ₄ mm			P _w N/mm ²	P _N N/mm ²		
20	47	17	20	26	110	11	133	57	M6	8
22	47	17	20	26	120	11	121	57	M6	8
24	50	17	20	26	150	12	125	60	M6	8
25	50	17	20	26	155	12	120	60	M6	8
28	55	17	20	26	170	12	107	55	M6	8
30	55	17	20	26	185	12	100	55	M6	8
32	60	17	20	26	265	16	125	67	M6	8
35	60	17	20	26	290	16	114	67	M6	8
38	65	17	20	26	390	20	131	77	M6	8
40	65	17	20	26	410	20	125	77	M6	8
42	75	20	24	32	595	28	138	78	M8	18
45	75	20	24	32	635	28	129	78	M8	18
48	80	20	24	32	680	28	121	73	M8	18
50	80	20	24	32	700	28	116	73	M8	18
55	85	20	24	32	905	33	123	80	M8	18
60	90	20	24	32	990	33	113	76	M8	18
65	95	20	24	32	1.225	37	119	82	M8	35
70	110	24	28	38	1.875	53	131	84	M10	35
75	115	24	28	38	2.010	53	123	80	M10	35
80	120	24	28	38	2.145	53	115	77	M10	35
85	125	24	28	38	2.600	61	124	84	M10	35
90	130	24	28	38	2.760	61	117	81	M10	35
95	135	24	28	38	3.280	69	124	88	M10	35
100	145	26	33	45	3.870	77	122	85	M12	60
110	155	26	33	45	4.260	77	111	79	M12	60

Additional diameters available upon request. Technical Specifications subject to change without notice.

Order data:

20 x 47 PSV 2001-R
d x D Type

Applications

- bottle capping machines
- meat slicing machines
- food conveyor systems
- applications involving cleaning substances

Technical Details

- not self-centering
- tolerances H9/h9
- surface roughness
R_a max 16µm for shaft and hub