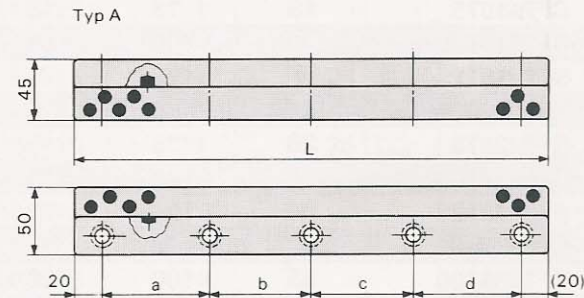
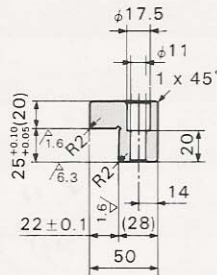
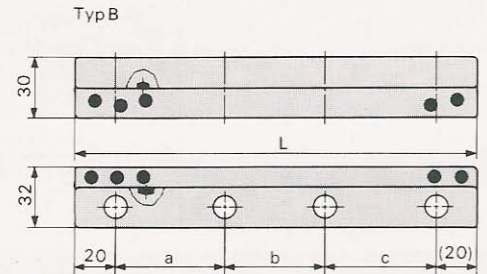
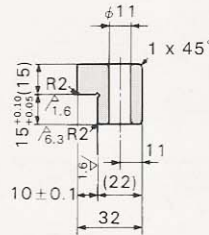
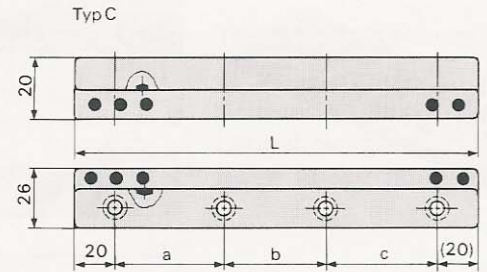
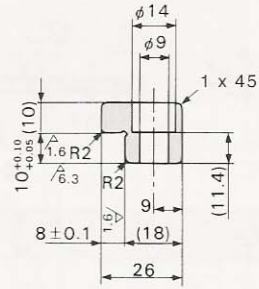
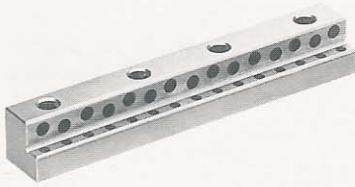


SLP [LP] Winkelleisten

[LP] noch gültige frühere Typ-Bezeichnung z.B. LP-50200 = SLP-50200



Bestell.-Nr.	Typ	L	a	b	c	d	Bohrungen	
							Schrauben	Anzahl
SLP-26100C	Typ C	100	60	—	—	—	M8	2
SLP-26150C		150	55	55				3
SLP-26200C		200		50	55			4
SLP-32100B	Typ B	100	60	—	—		M10	2
SLP-32150B		150	55	55				3
SLP-32200B		200		50	55			4
SLP-32250B		250	70	70	70			
SLP-50200A	Typ A	200	55	50	55			
SLP-50250A		250	70	70	70			
SLP-50300A		300	65	65	65	65		5
SLP-50350A		350	80	75	75	80		